



517



521



522



523

II 食

1. 貯藏用具



531



532



533



536



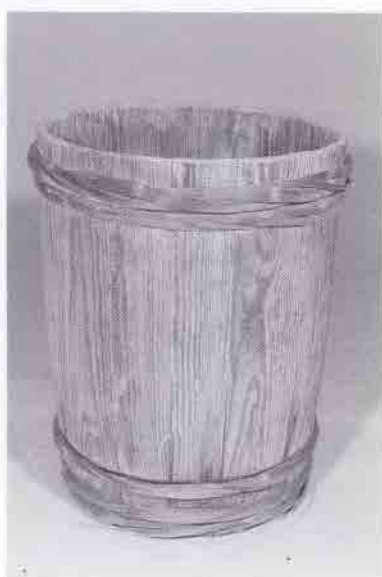
544



535



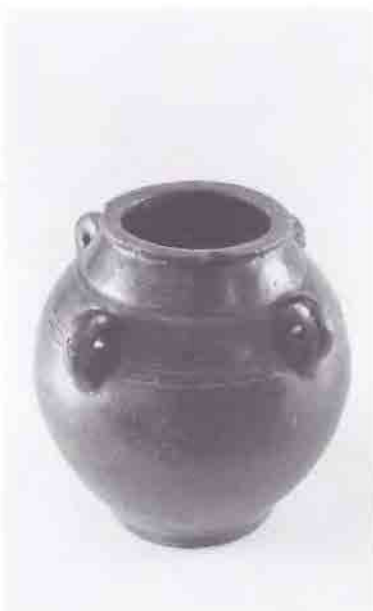
546



548



553



559



560



565



570



571



586



589



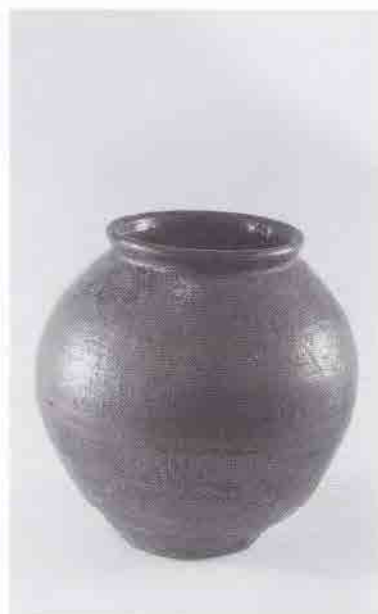
604



609



613



615



622



629



637



646



648



650



651



658



662



684



698



700



704



707



724



708



710



712



728



730



732



734



738



741



742



748



751



755



773



781



782



783



784



789



790



802

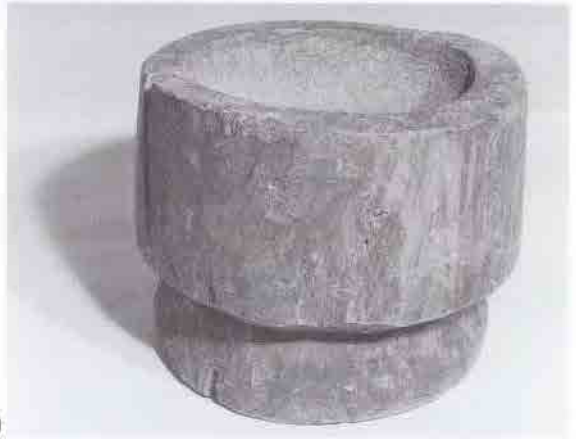


809



810

2. 製造用具



819



817



818



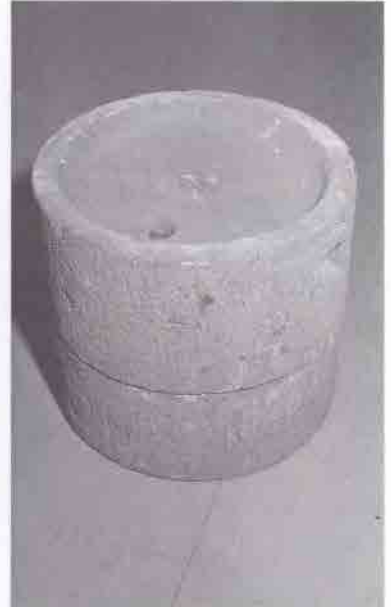
820



824



826



829



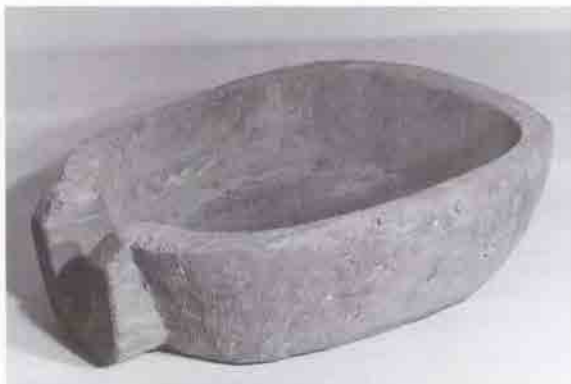
830



831



832



833



834+5



837



838



838



839



840



841



842



842



843



846



846



851



849



851



855



855



860



861



862



863



864



870



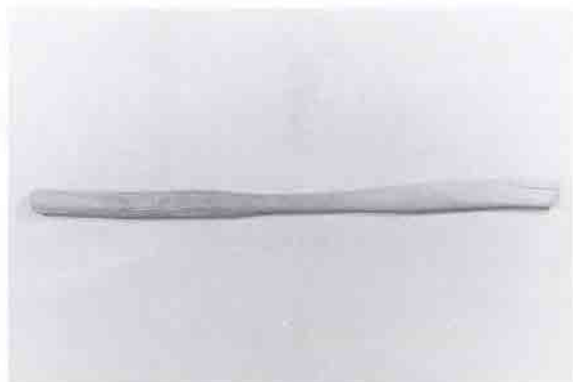
871



872



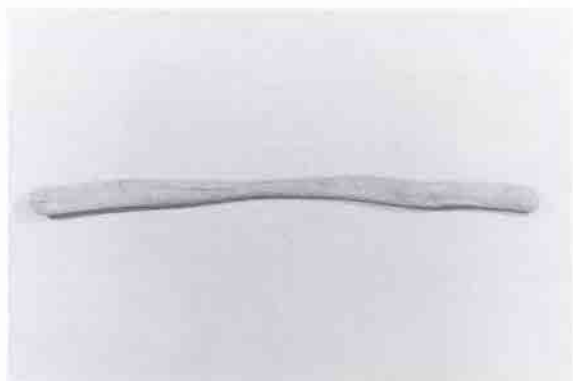
874



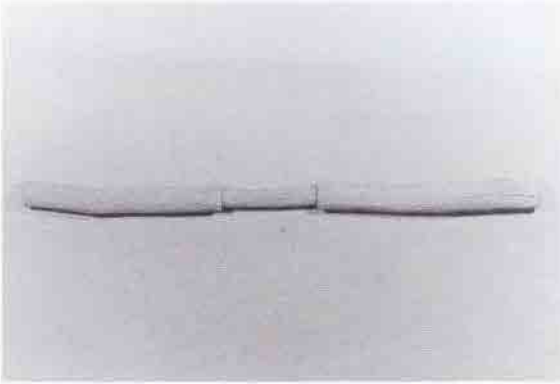
880



882



899



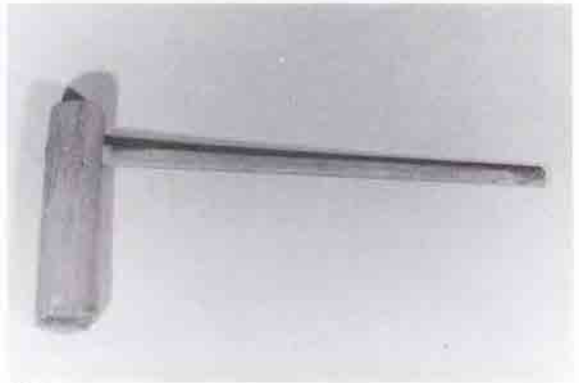
903



910



913



930



931



934



938



939



946



947



950



953



954



956



957



958



960



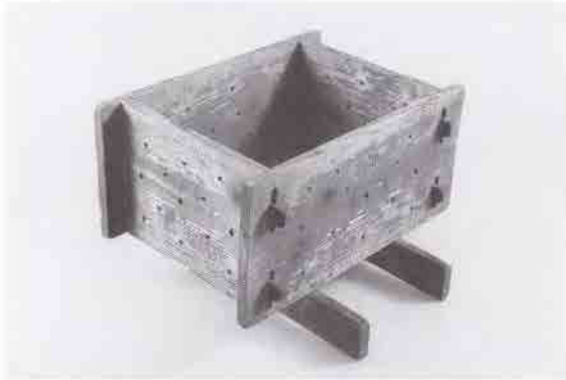
965



966



978



983



985



988



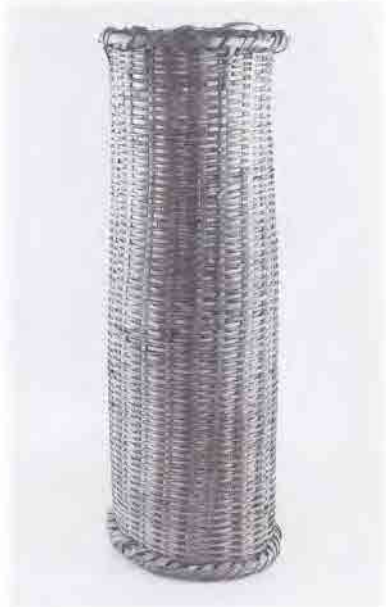
991



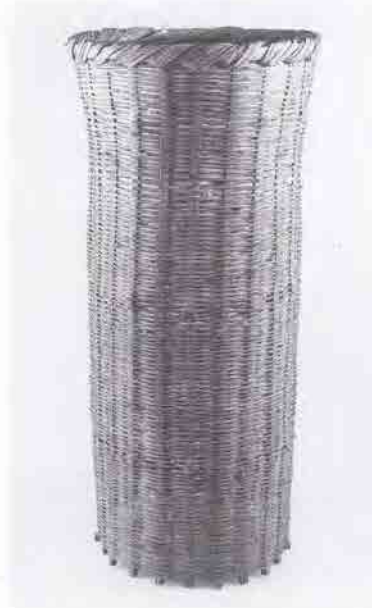
994



996



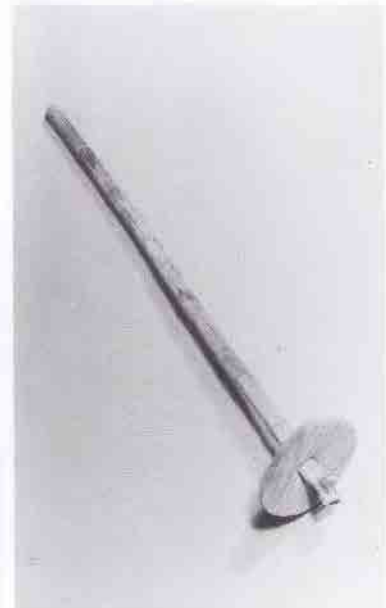
1001



1008



1009



1011



1012



1021



1022



1024



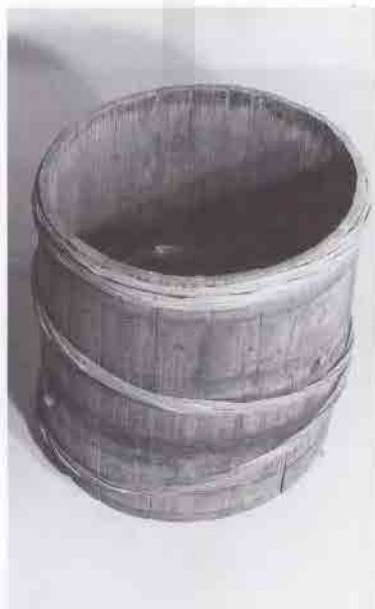
1025



1026



1029



1032



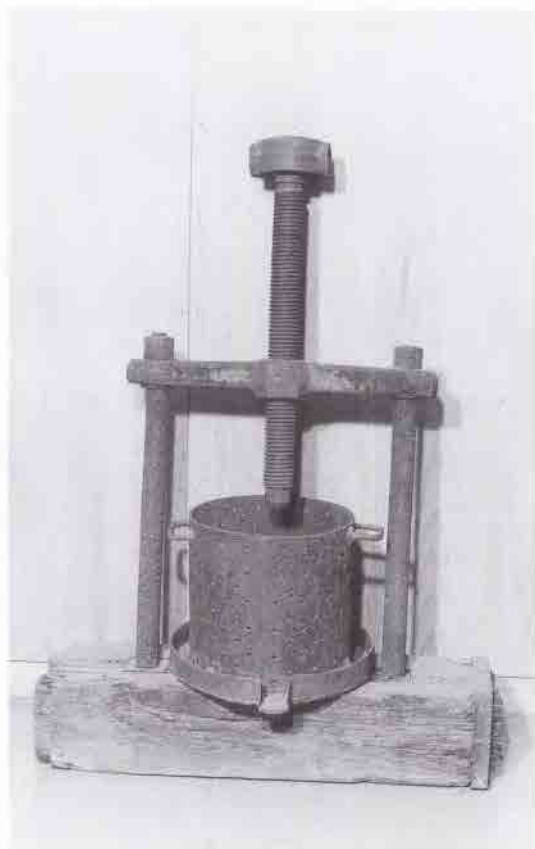
1037



1033



1035



1038



1040



1041



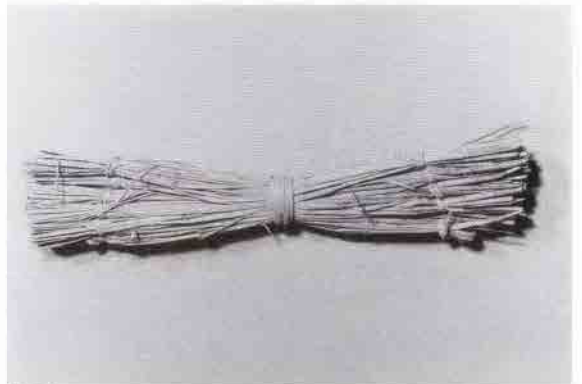
1042



1052



1053



1064



1072



1081

3. 炊事用具



1131



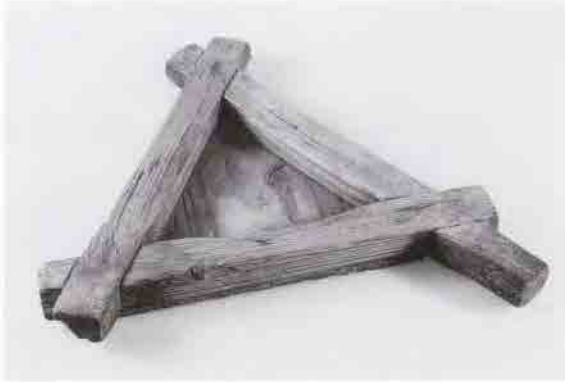
1137



1141



1150



1152



1157



1158



1167



1170



1210



1211



1213



1213



1217



1217



1221



1236



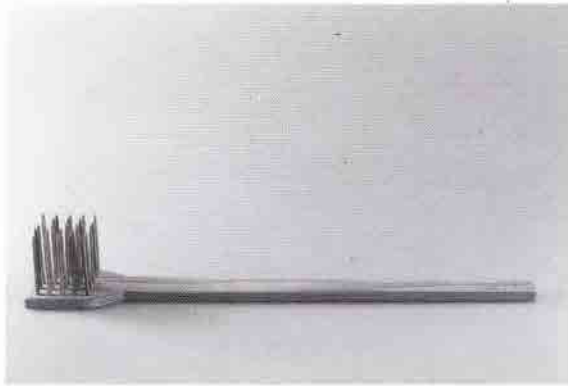
1241



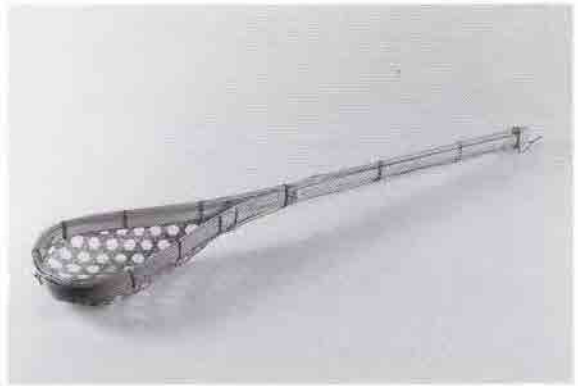
1242



1262



1264



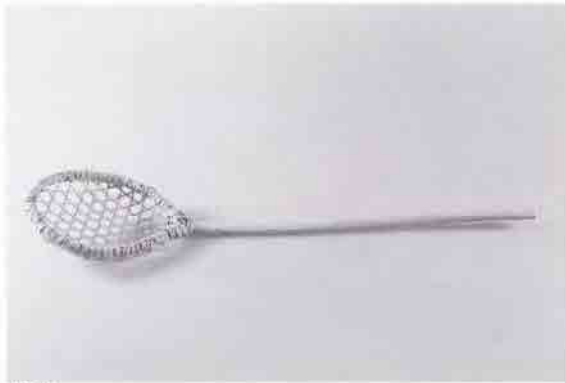
1265



1266



1267



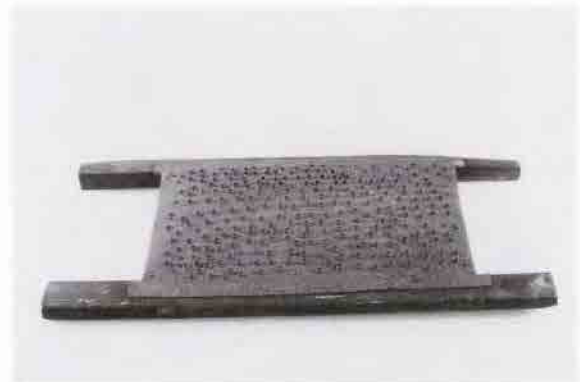
1270



1281



1284



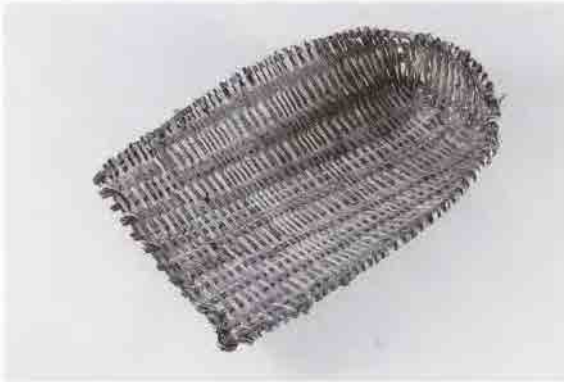
1285



1300



1304



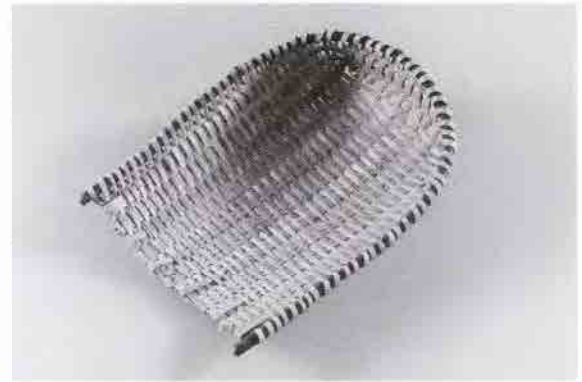
1310



1311



1314



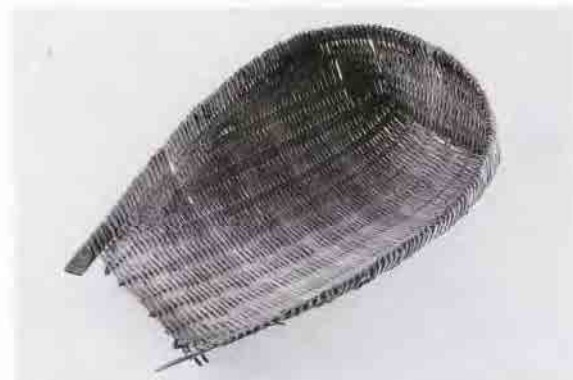
1322



1326



1327

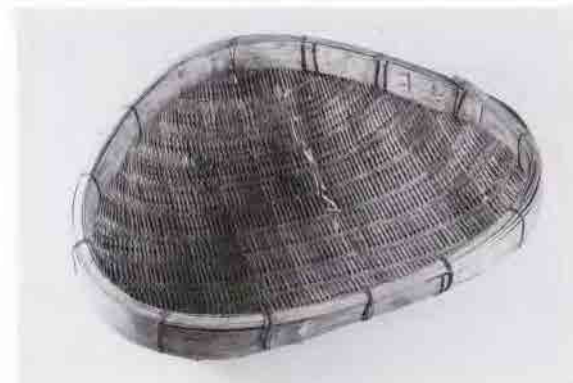


1328



1333

4. 食器



1335



1351



1354



1355



1357



1359



1361



1365



1367



1368



1369



1372



1378



1381



1386



1387



1393



1396



1406



1412



1413



1414



1422



1424



1426



1430



1432



1433



1442



1444



1447



1453



1457



1461



1463



1465



1466



1467



1468



1469



1470



1476



1478



1480



1484



1487



1488



1490



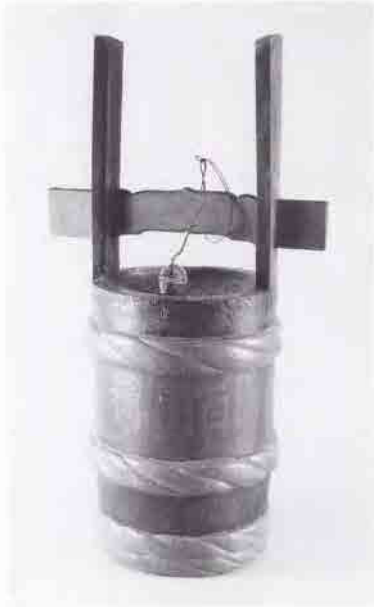
1492



1499



1501



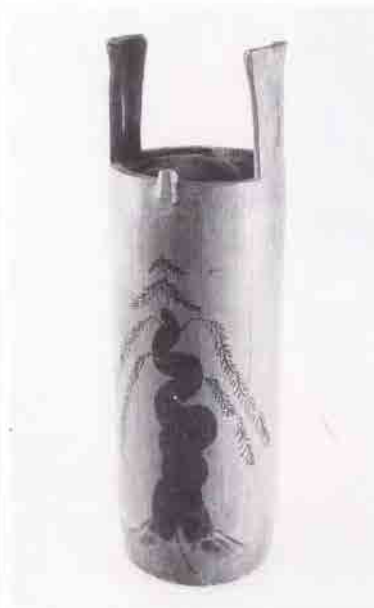
1503



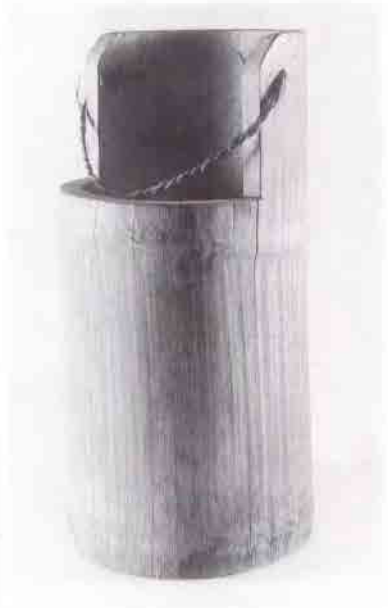
1507



1509



1510



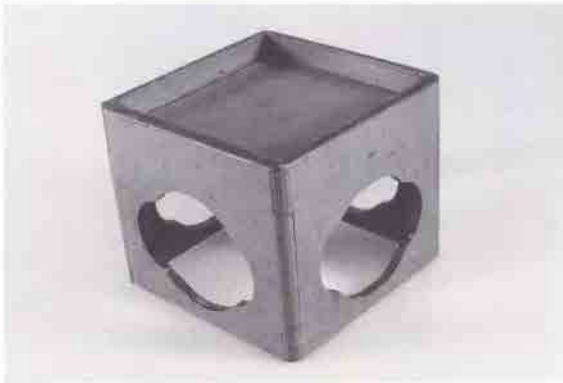
1522



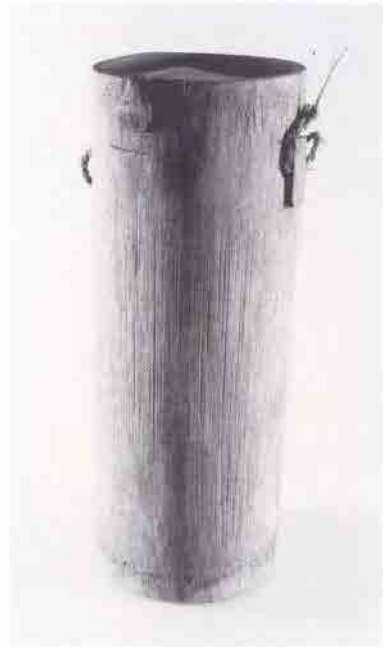
1513



1517



1520



1523



1528



1530



1532



1534



1535



1537



1539



1553



1555



1566



1574



1577



1578



1582



1587



1610



1613



1621



1624



1636



1638



1640



1641

5. その他



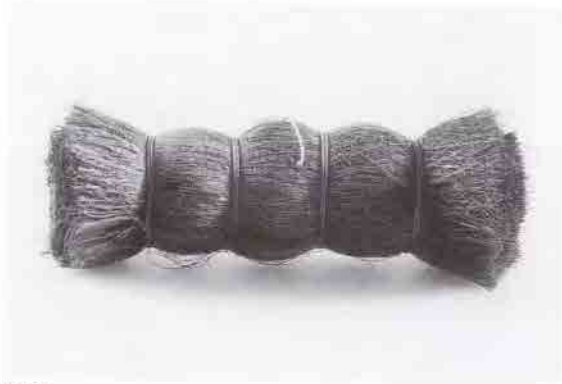
1653



1656



1660



1661



1664

Ⅲ 住
1. 家屋



1668



1691



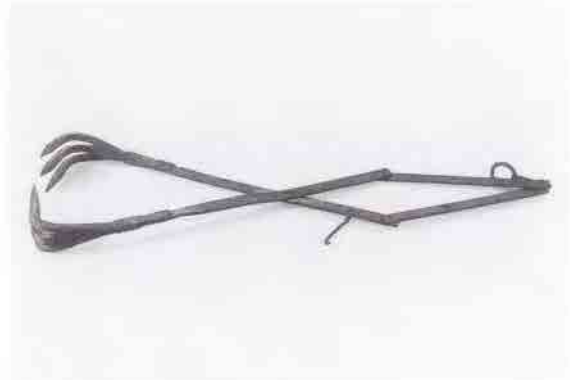
1694



1704



1705

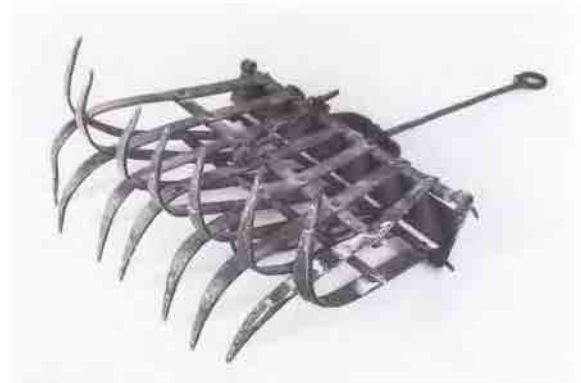


1707



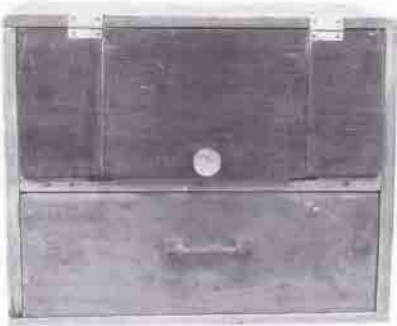
1708

2. 収納具



1709

3. 照明具



1713



1735



1746



1748



1750



1752



1754



1755



1764



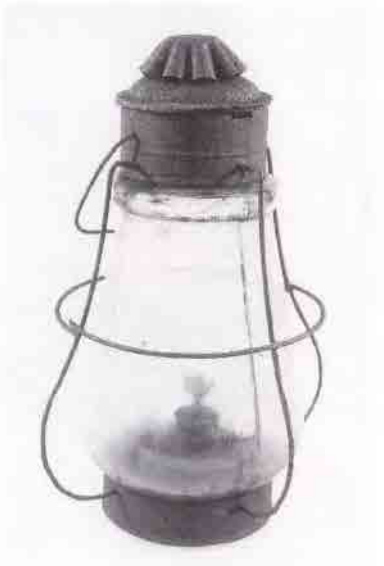
1764



1772



1775



1779



1788



1801



1803

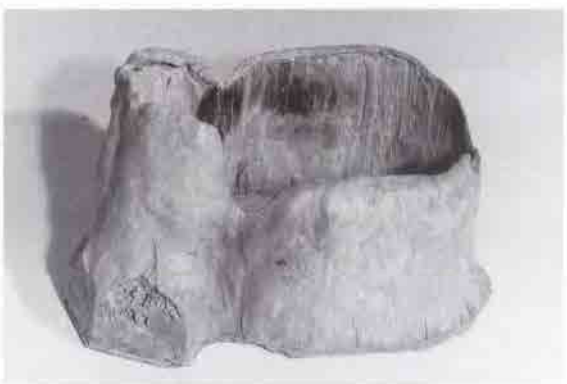
4. 暖房具



1810



1813



1824



1828



1830



1831



1833



1837



1838

180



1839

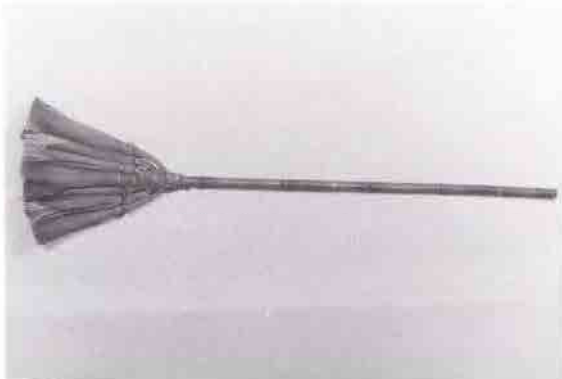
5. その他



1847



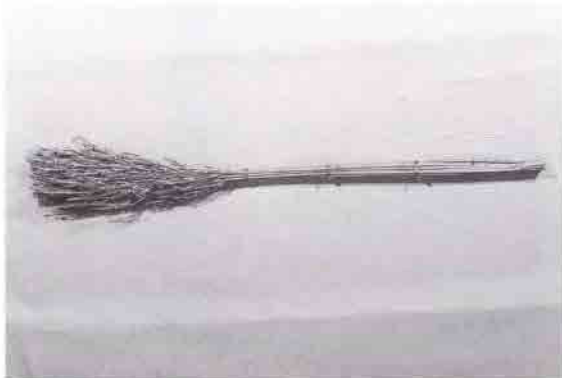
1852



1854



1859



1860



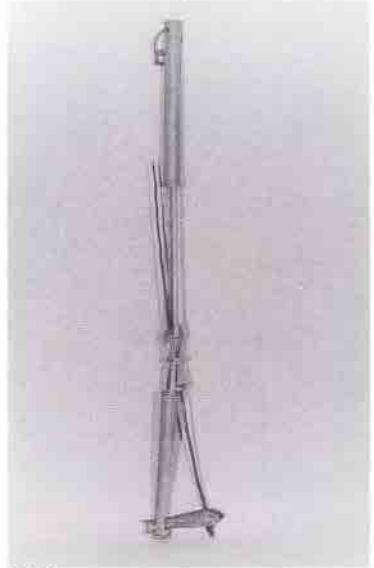
1862



1874



1875



1881



1882



1885



1891



1903



1905



1911



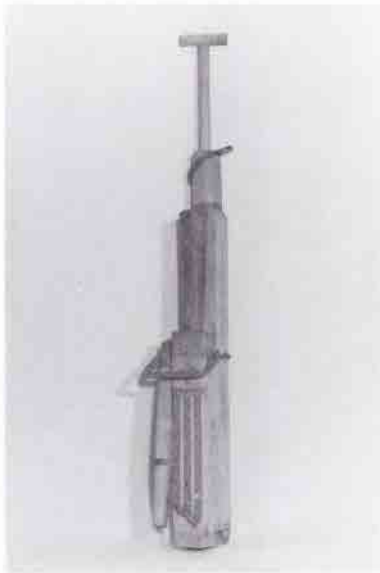
1912



1914



1916



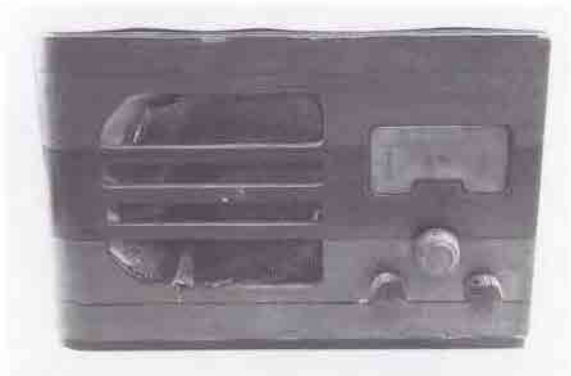
1918



1924



1928



1930



1935



1932



1936



1939



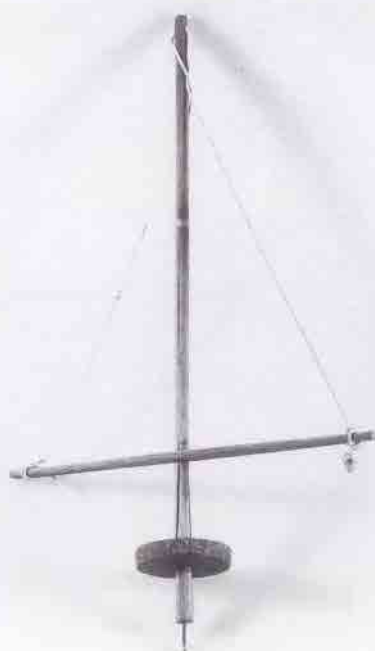
1940



1955



1956



1960



1965



1968



1971



1973



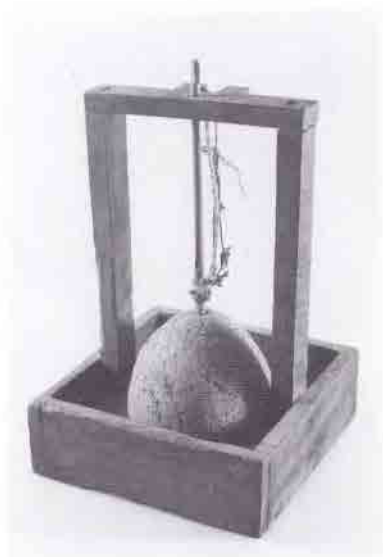
1975



1977



1987



1991



1992



1997



1999



2004

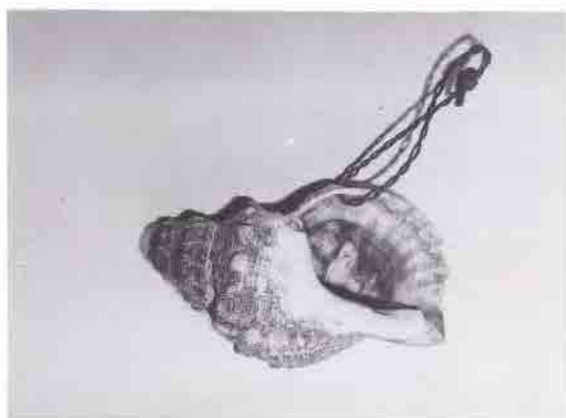


2006



2029

IV 年中行事・信仰・娯楽など
1. 社会生活



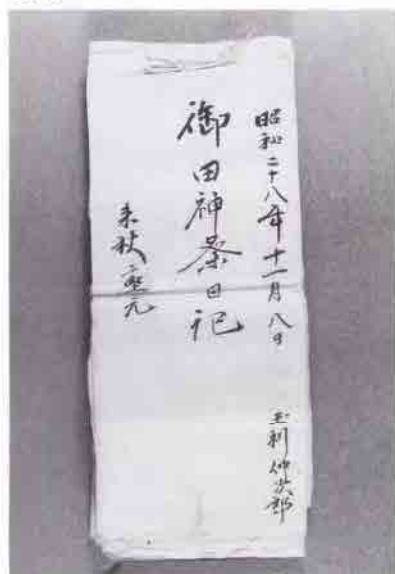
2031



2033



2036



2037



2043



2044



2046



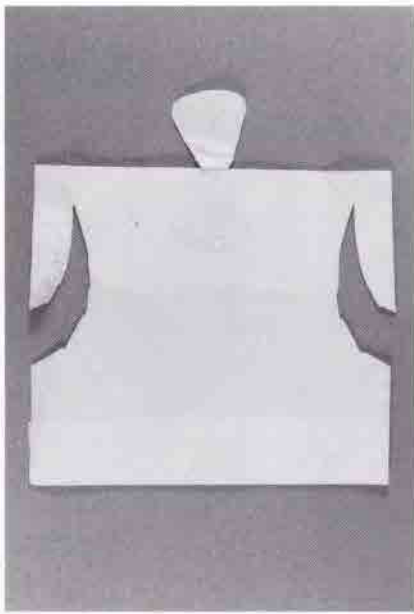
2053



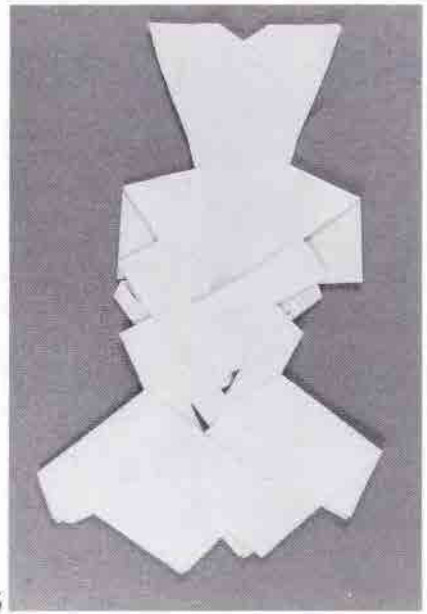
2047



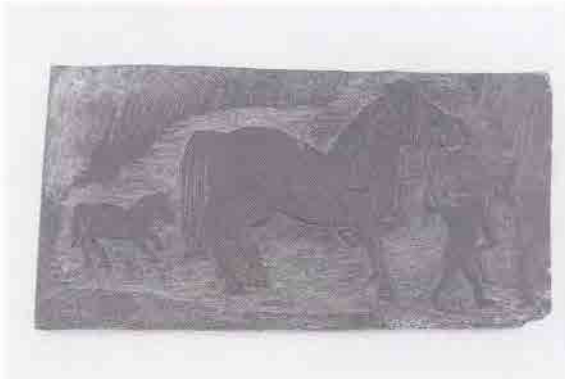
2063



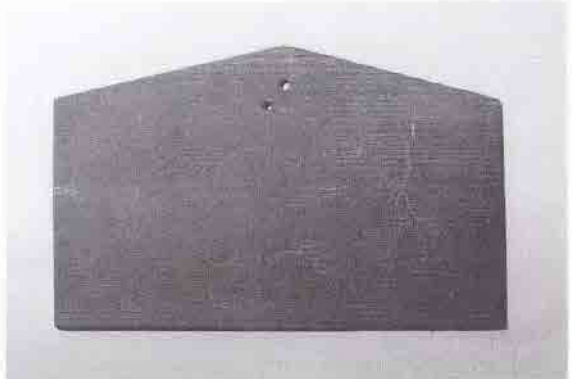
2064



2066



2071



2072



2075



2081



2085



2088

3. 民俗知識



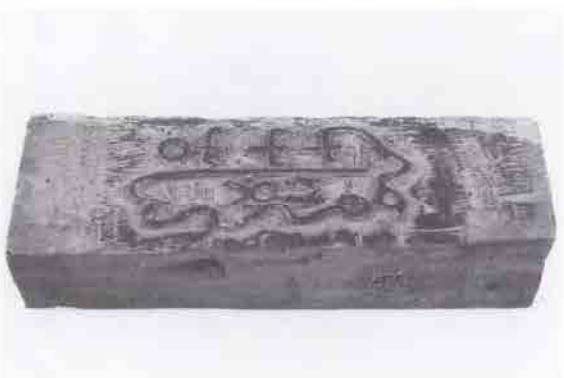
2120



2121



2123



2124

4. 民俗芸能・娯楽



2127



2130



2132



2137



2154



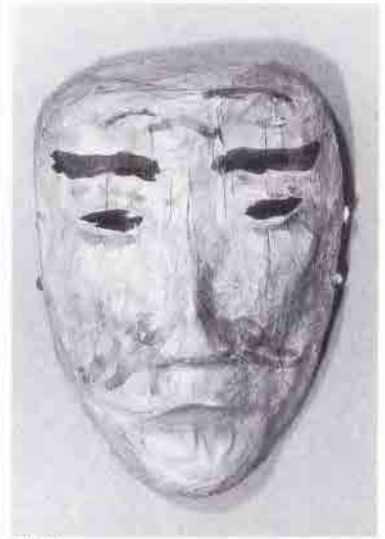
2138



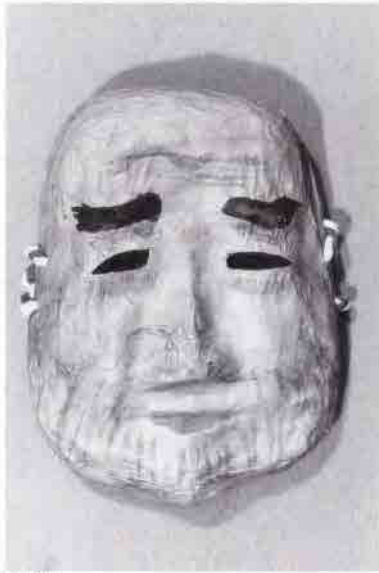
2156



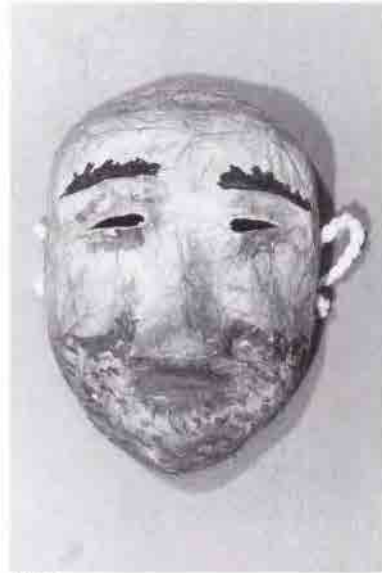
2157



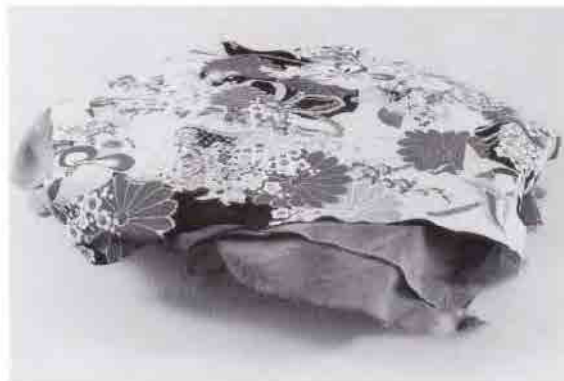
2164



2169



2170



2175



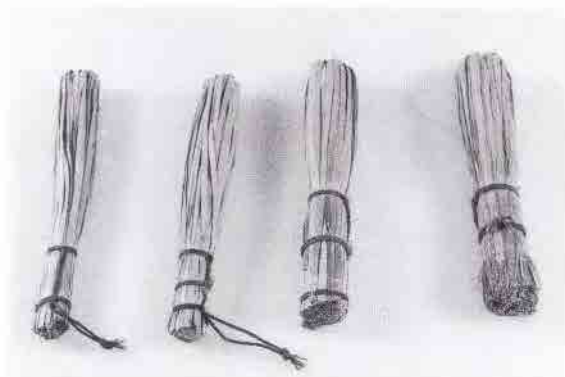
2177



2178



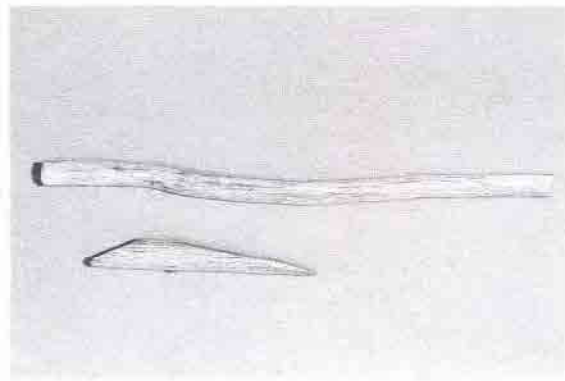
2186



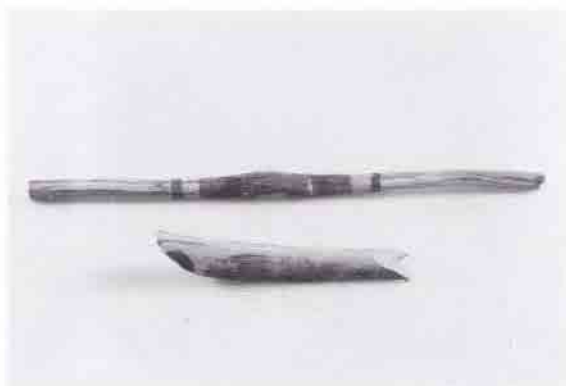
2188



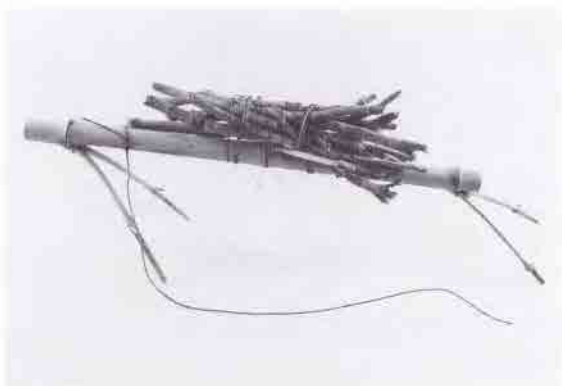
2194



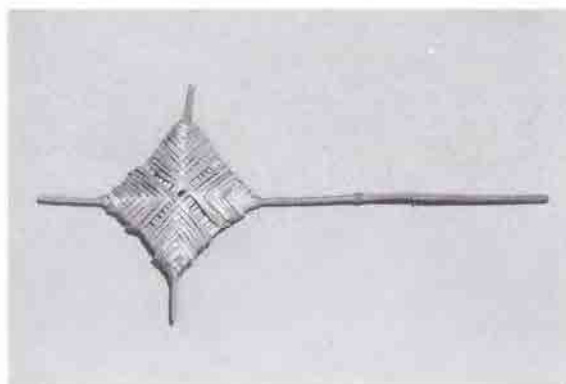
2208·09



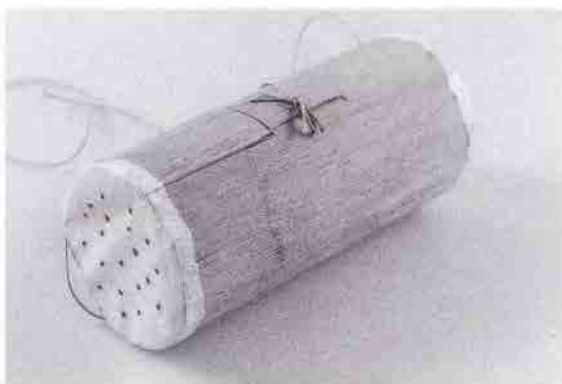
2212



2215



2216



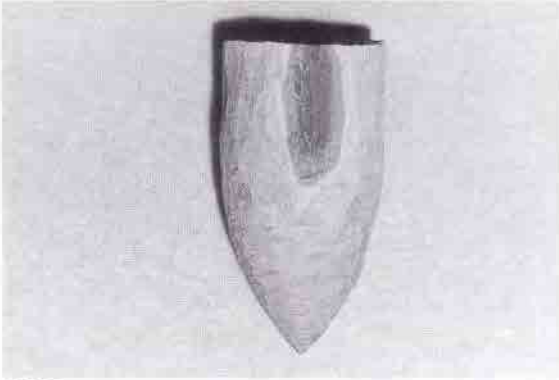
2217



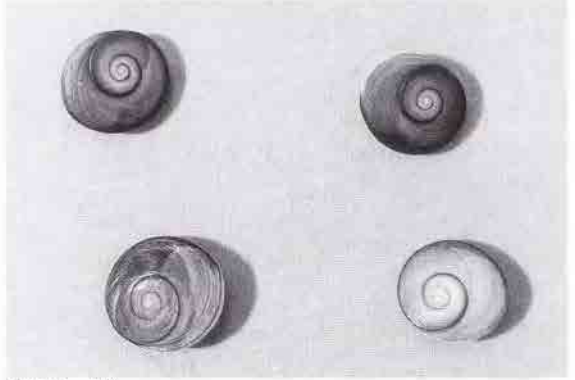
2218



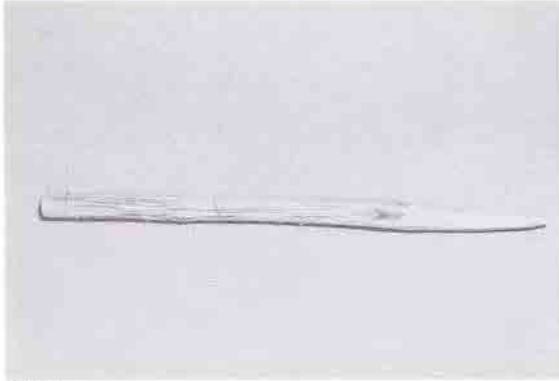
2222 · 23 · 24



2225



2226 · 27



2230



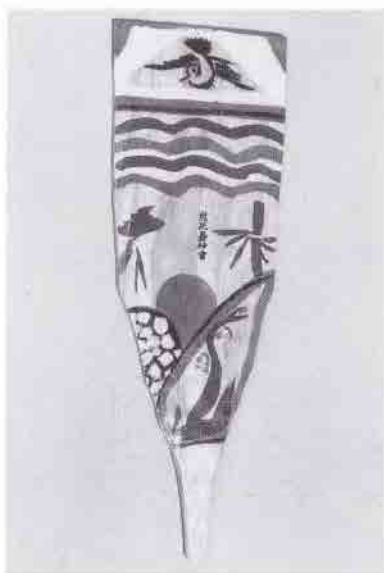
2231



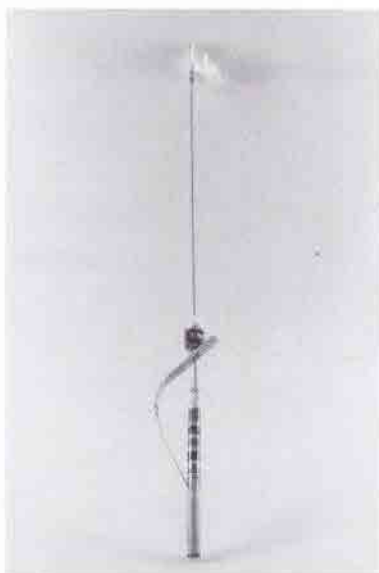
2232



2234



2237



2239

5. 人生儀礼



2241



2242

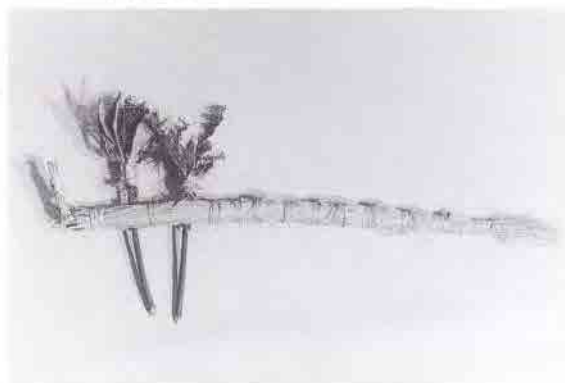


2246

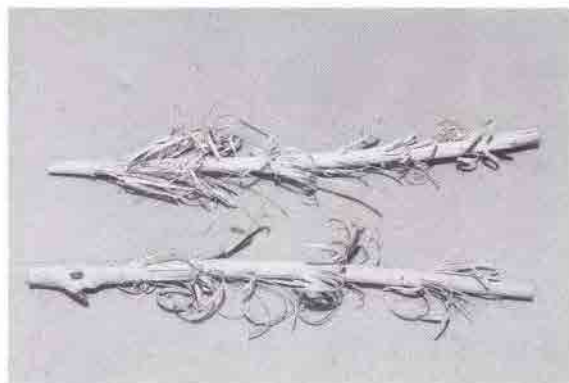


2254

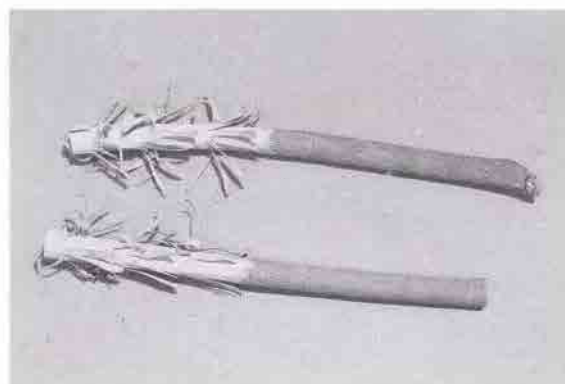
6. 年中行事



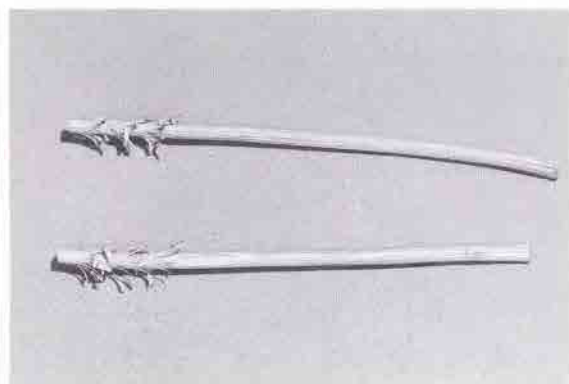
2263



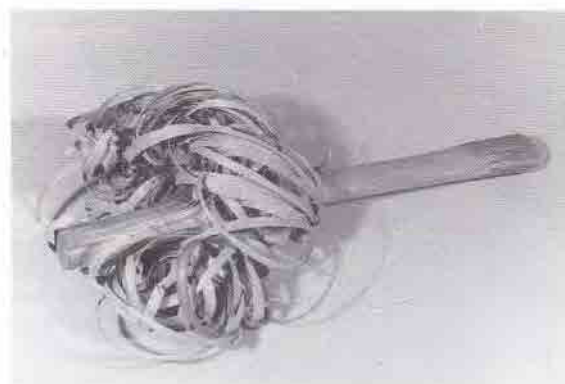
2266・67



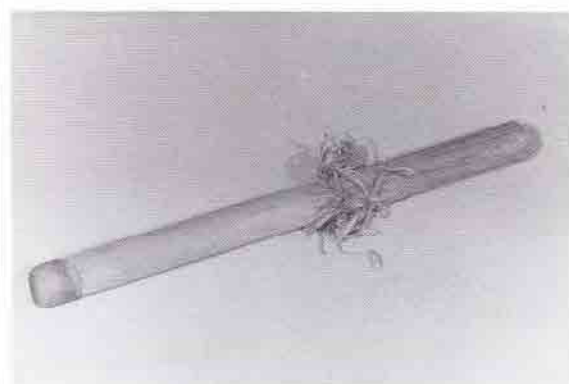
2271



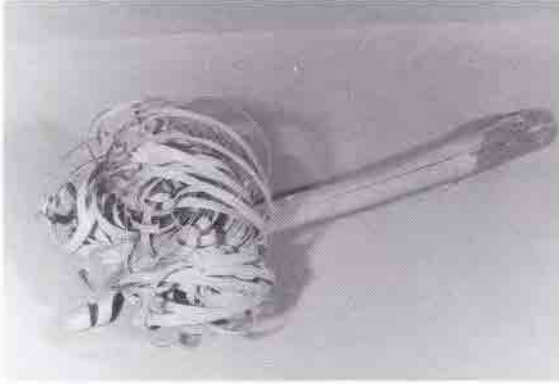
2275



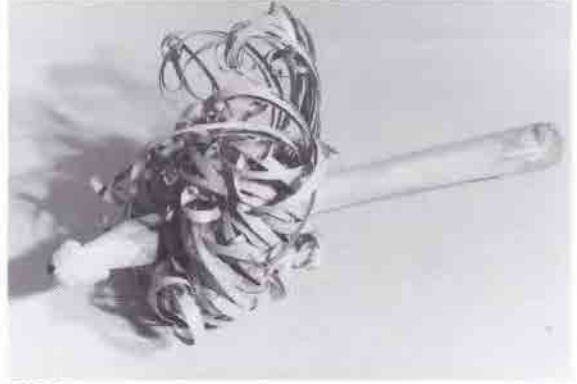
2278



2280



2284



2288



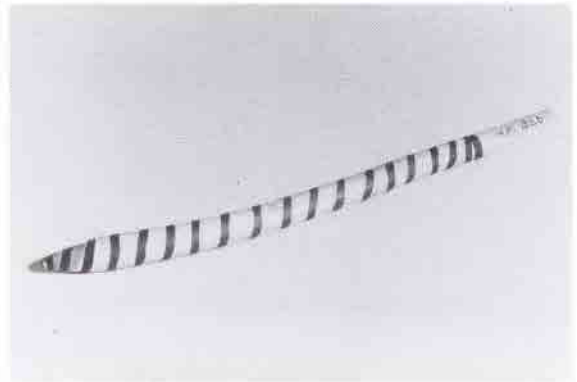
2292



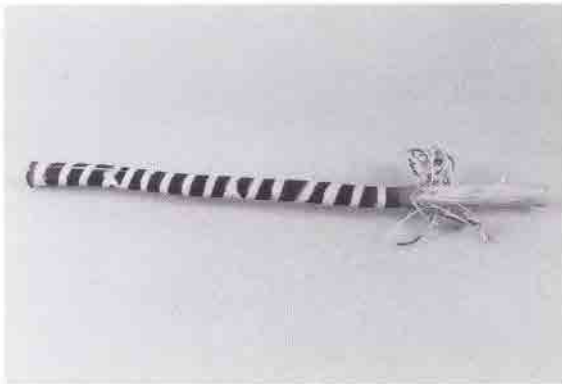
2293



2304



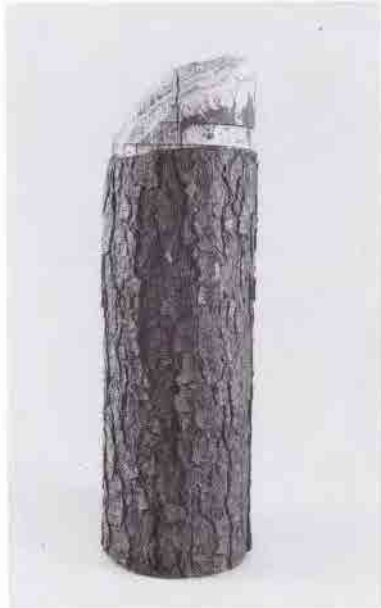
2311



2313



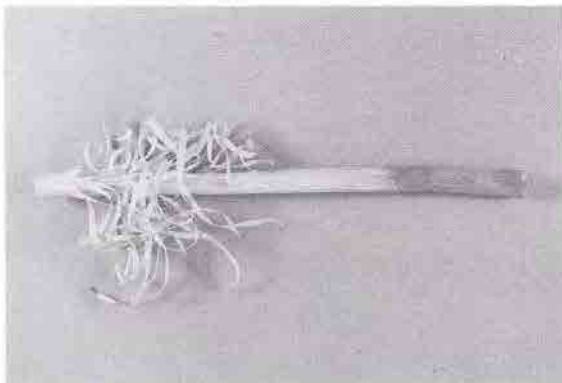
2314



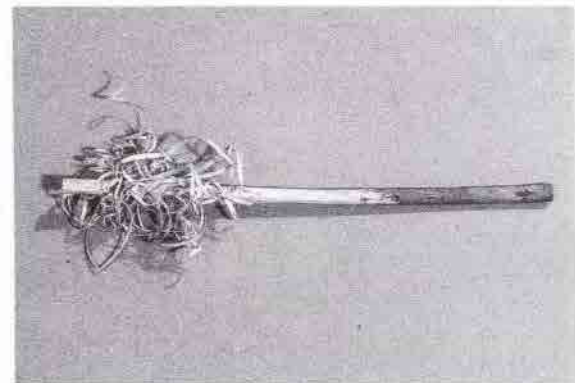
2316



2319



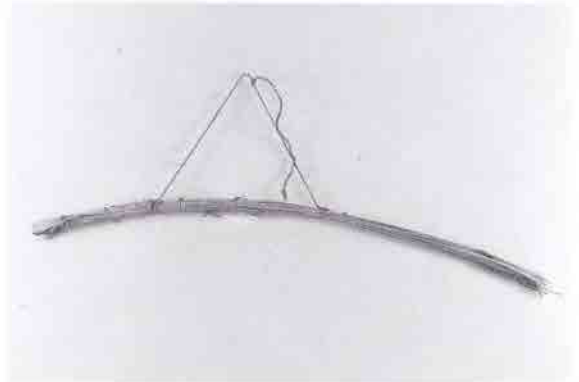
2325



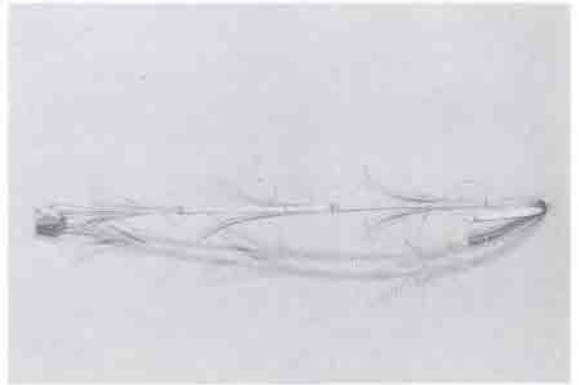
2326



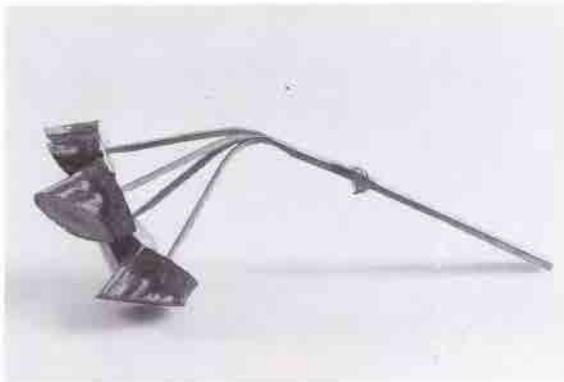
2332



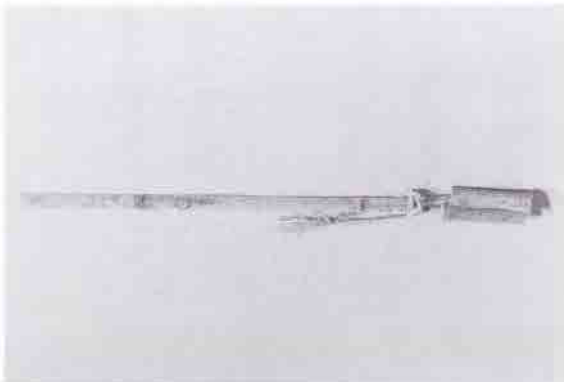
2335



2339



2338



2352



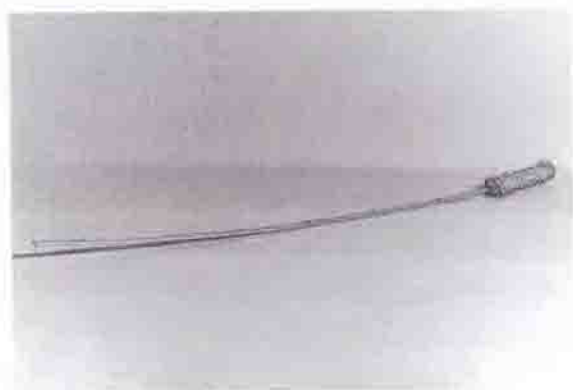
2353



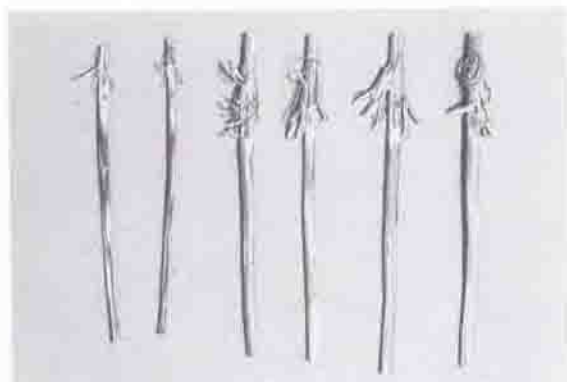
2355



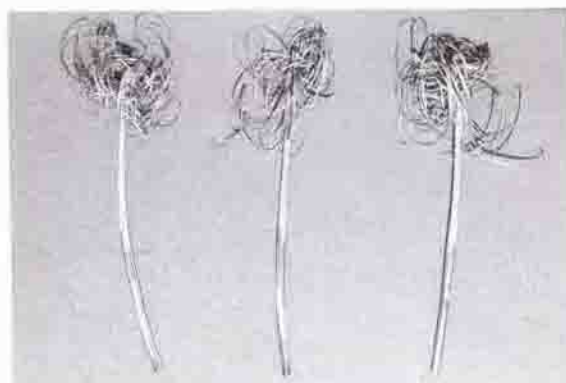
2361



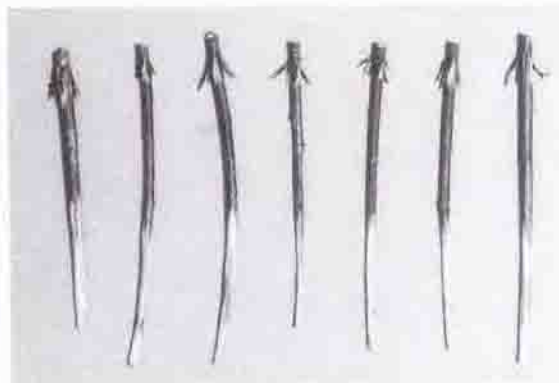
2369



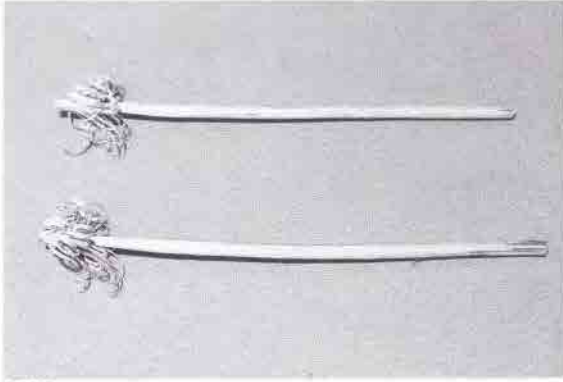
2371



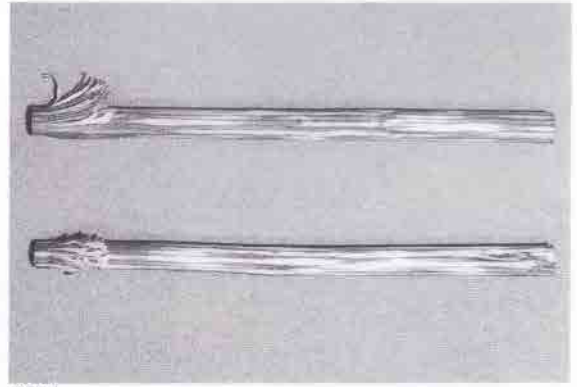
2372



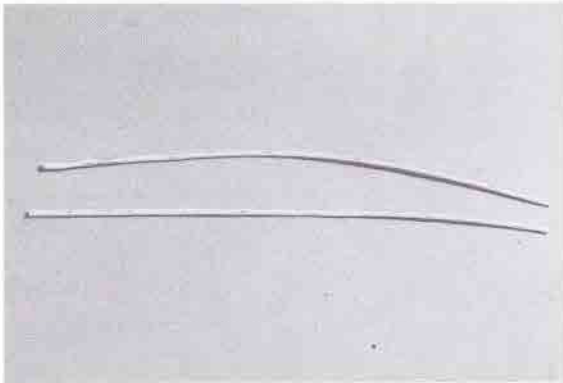
2373



2380



2381



2384



2385



2386·7



2391



2393



2395



2398



2401



2405



2406-07



2409



2410



2411



2412



2413



2416



2417



2422



2425



2428



2431



2433



2439



2440



2446



2448



2449



2452



2457



2458



2460



2468



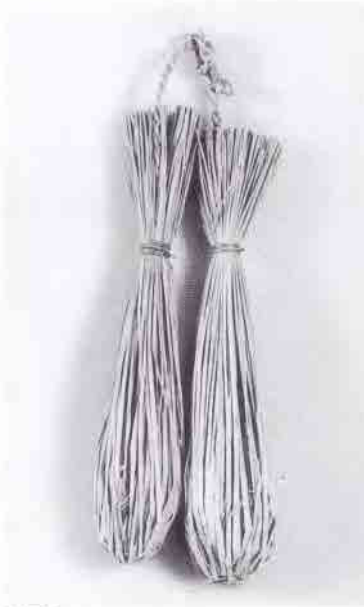
2471



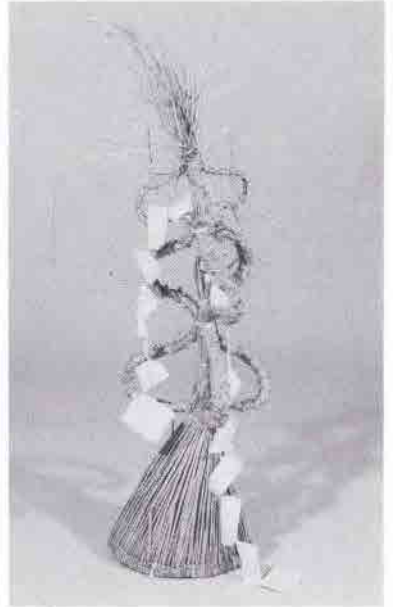
2474



2475



2477



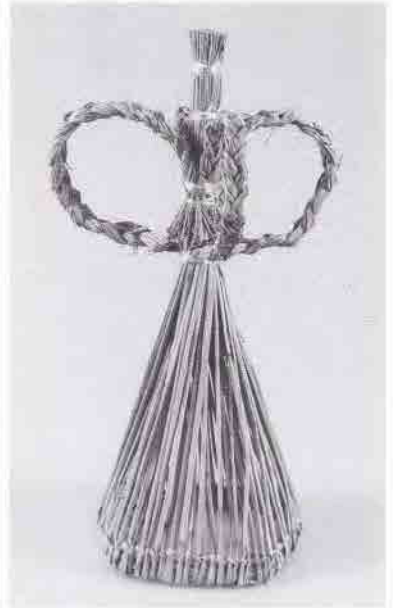
2484



2487



2488



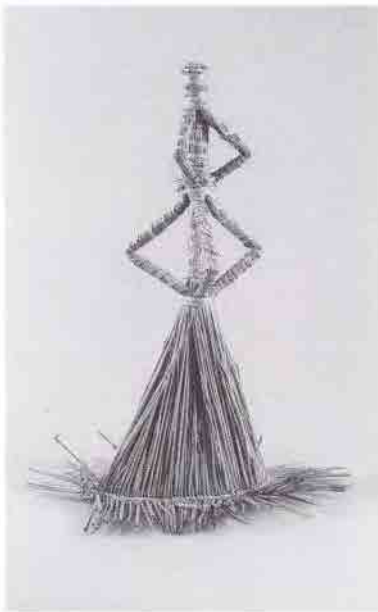
2489



2490



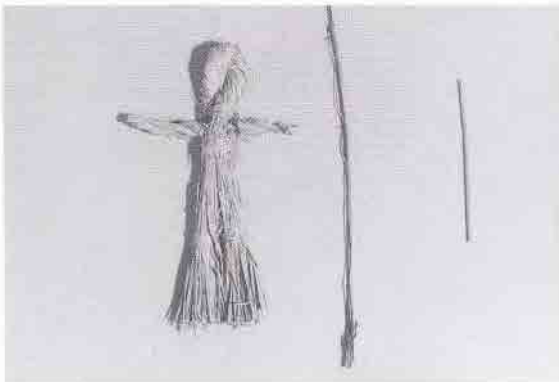
2492



2500



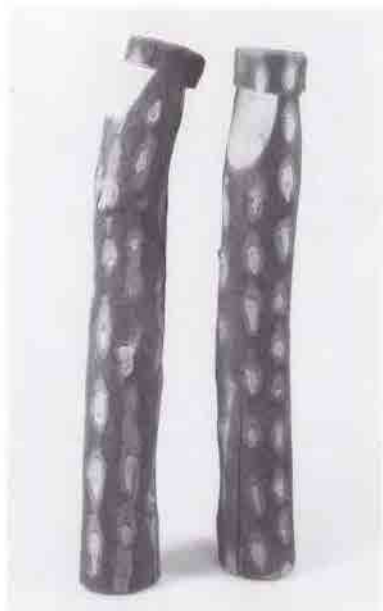
2503



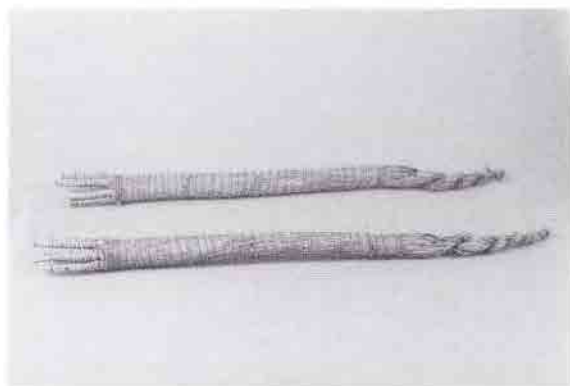
2512·13



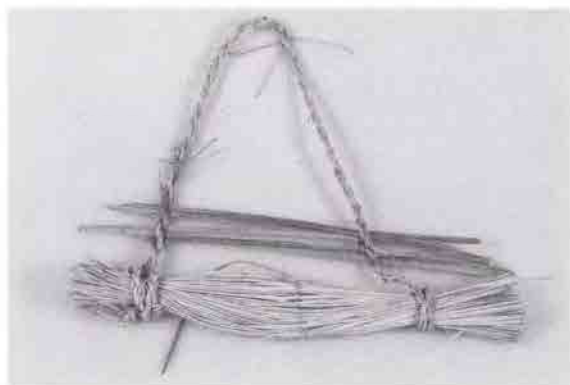
2514



2515



2516



2532



2538



2540



2543

鹿児島県歴史資料センター黎明館

所蔵品目録 (Ⅵ) 民俗

Catalogue of Collections (Ⅵ) Folklore Section

Kagoshima Prefectural Museum of Culture

REIMEIKAN 1989

編集・発行 鹿児島県歴史資料センター黎明館

鹿児島市城山町5番1号

電話 (0992) 22-5100

平成元年3月31日

印 刷 (有)朝日印刷

鹿児島市上荒田町854-1

電話 (0992) 51-2191