

■資料写真(モノクロ)

V. 漁撈

1. 漁船と付属品



2679



2715



2720



2722



2729



2734

資料写真
(モノクロ)

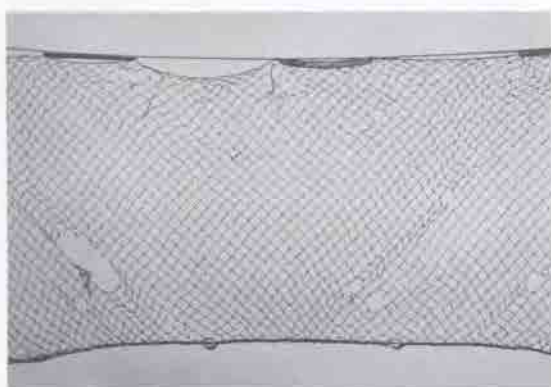


2761



2774

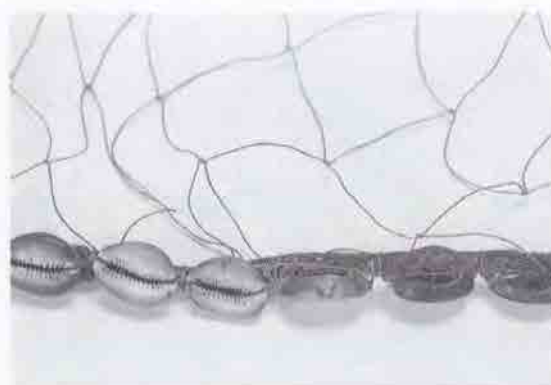
2. 海漁撈具



2783



2786



2791



2791



2792



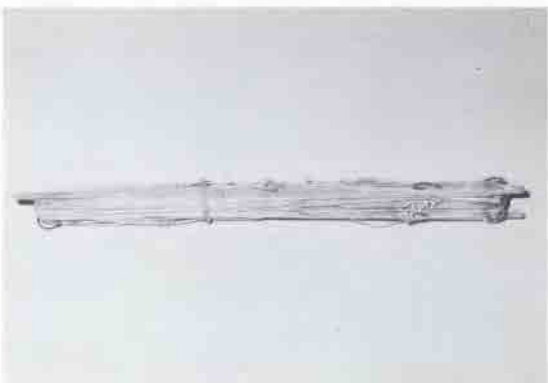
2801



2805



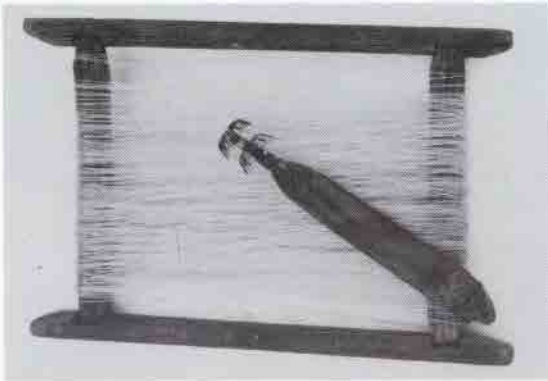
2812



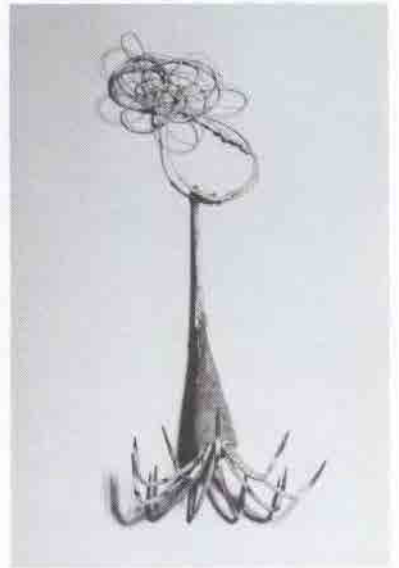
2831, 3121



2833



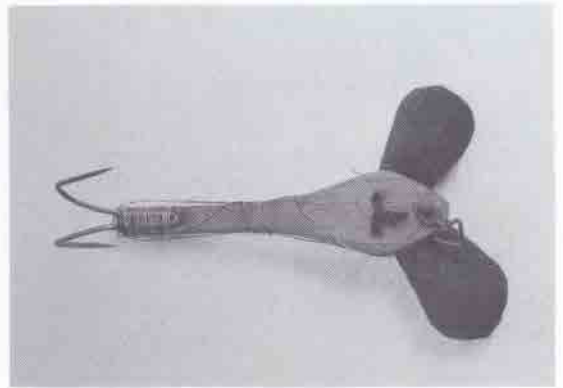
2837



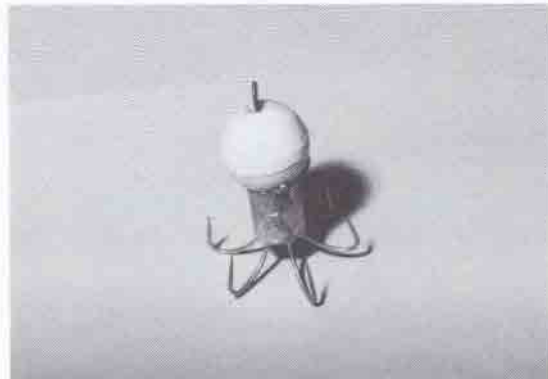
2847



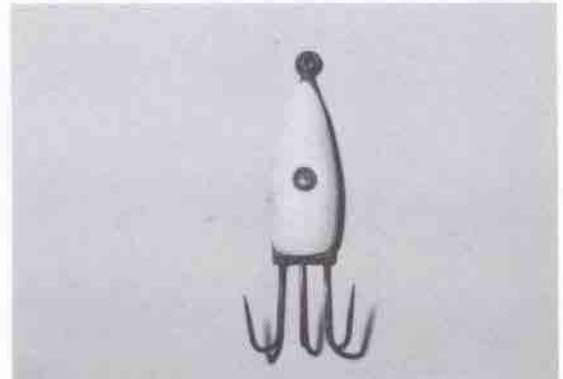
2850



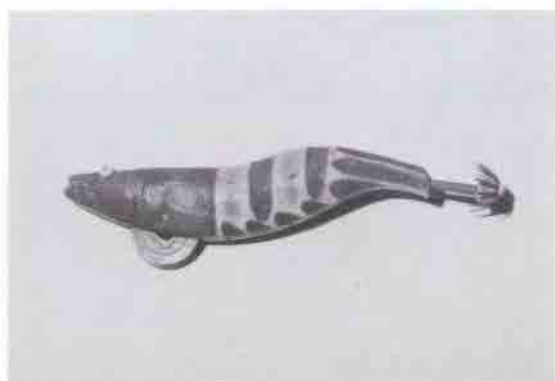
2861



2864



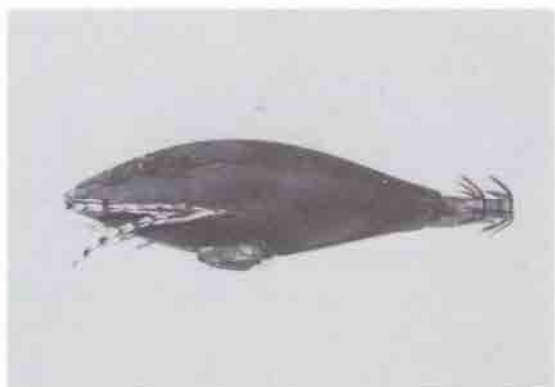
2866



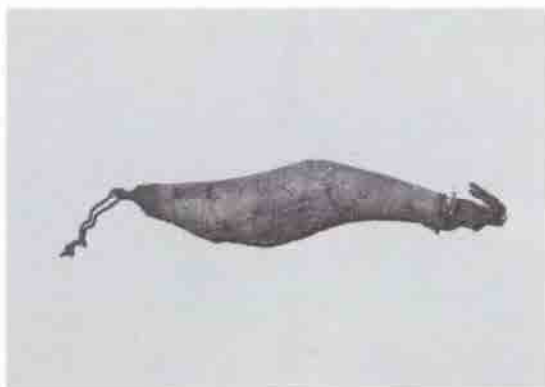
2875



2884



2887



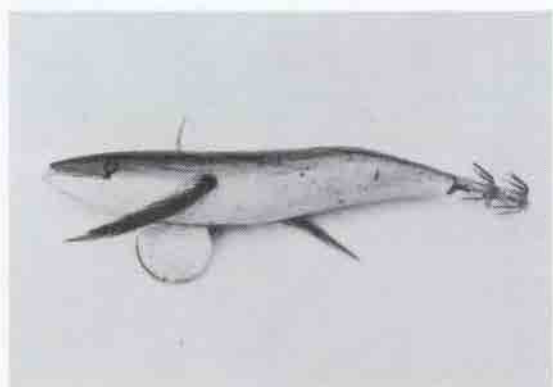
2900



2964



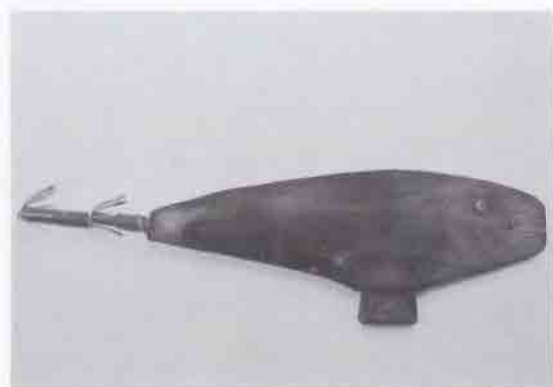
2967



2969



2972



2975



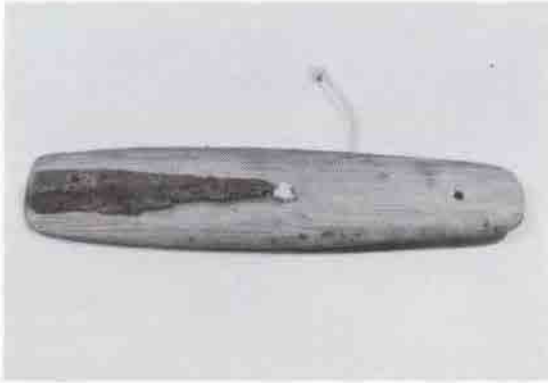
2981



3008



3012



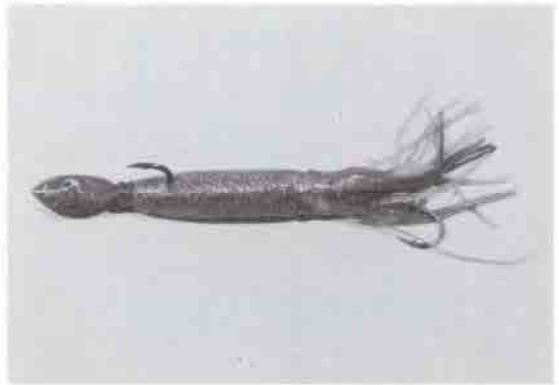
3015



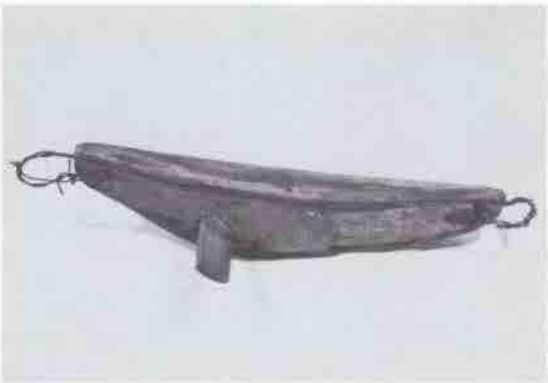
3017



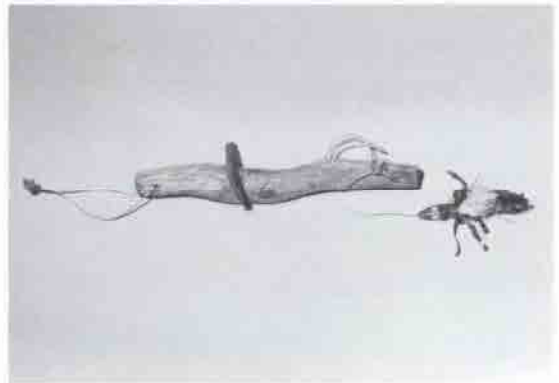
3019



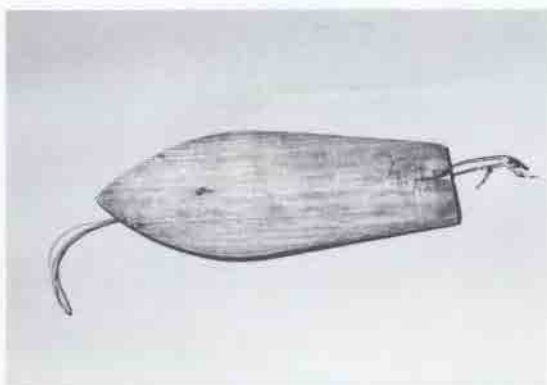
3020



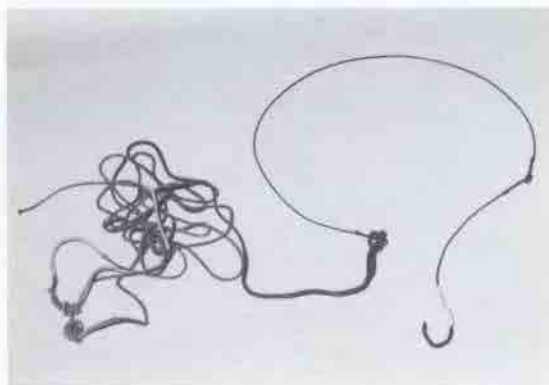
3028



3031



3035



3040



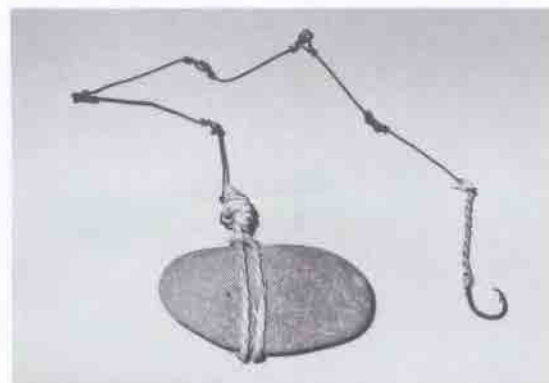
3047



3120



3125



3127



3145



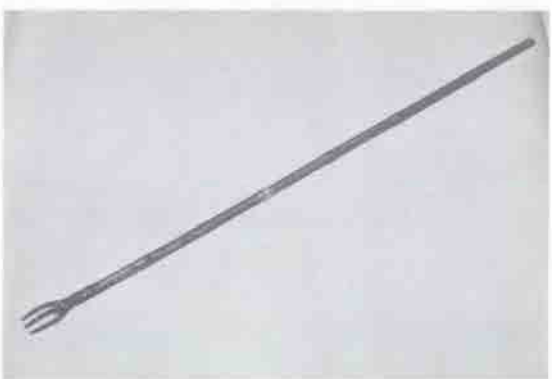
3159



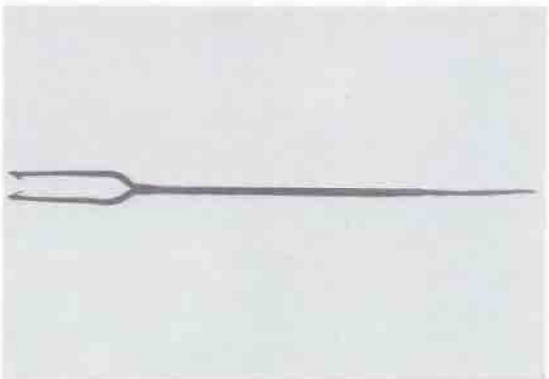
3176



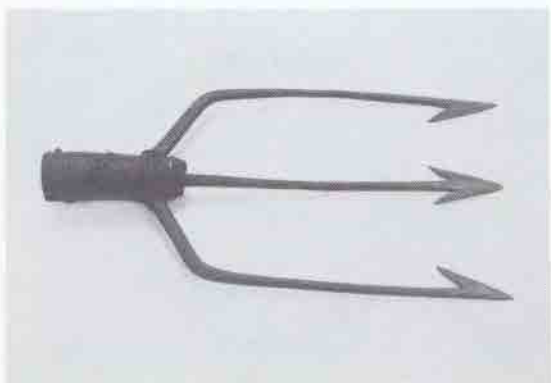
3181



3185



3194



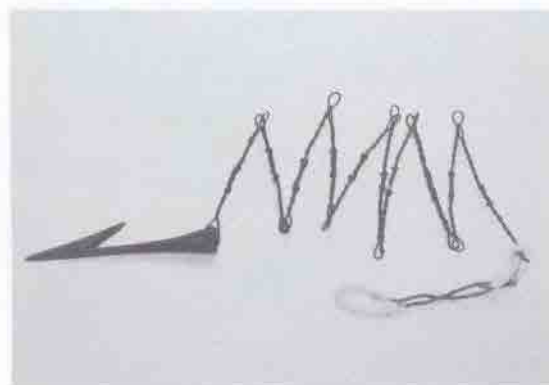
3203



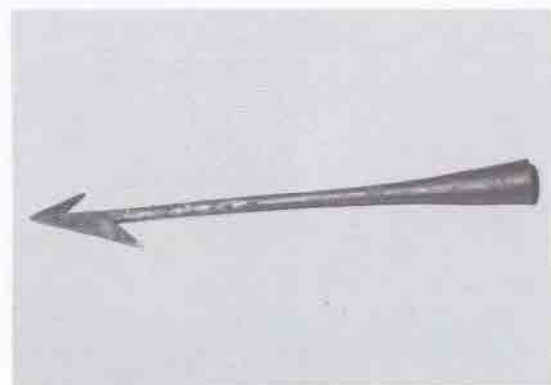
3223



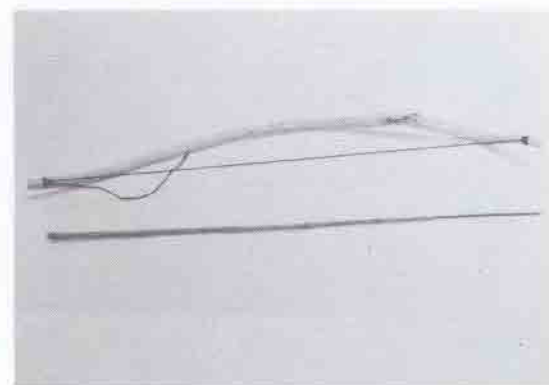
3224



3230

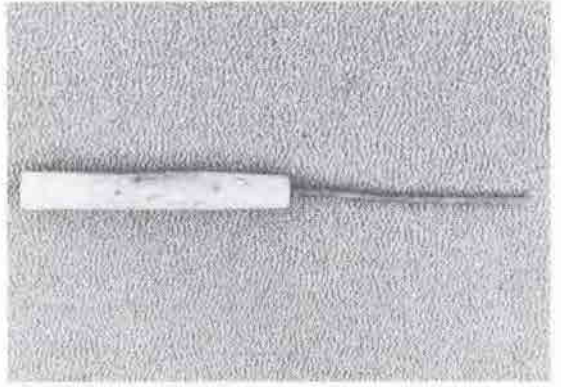


3237



3241

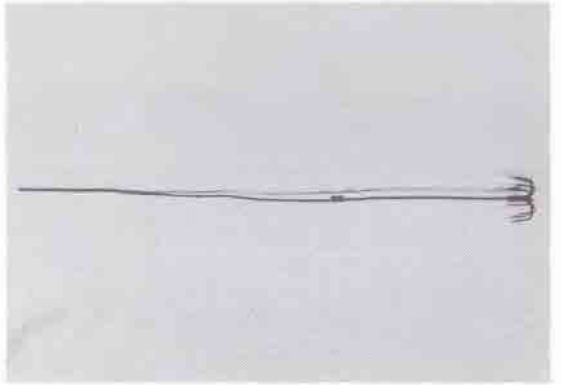
3262



3266



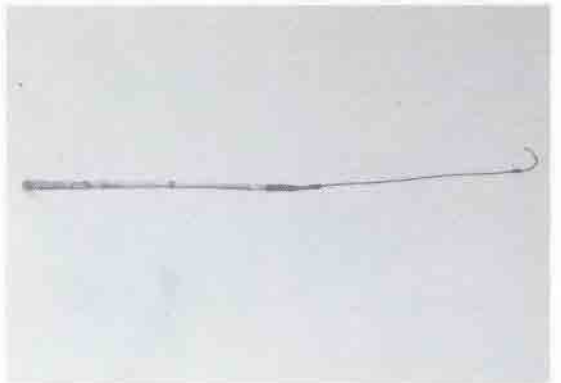
3253



3258

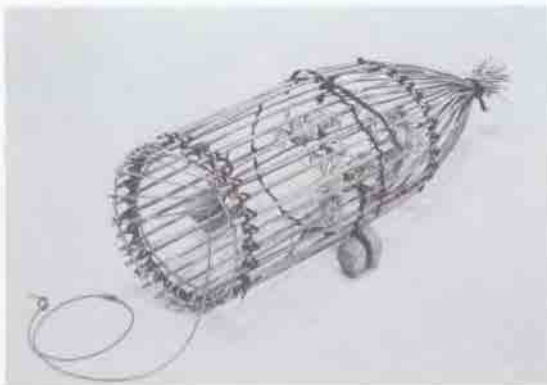


3243

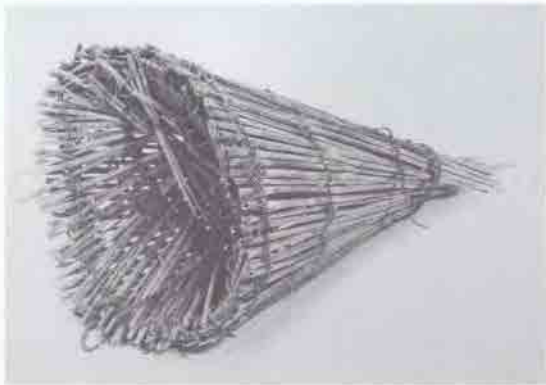


3244





3286



3288



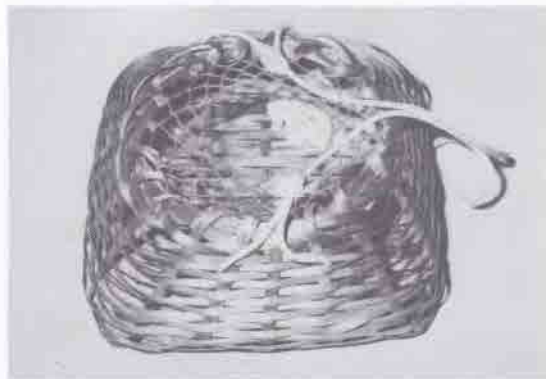
3290



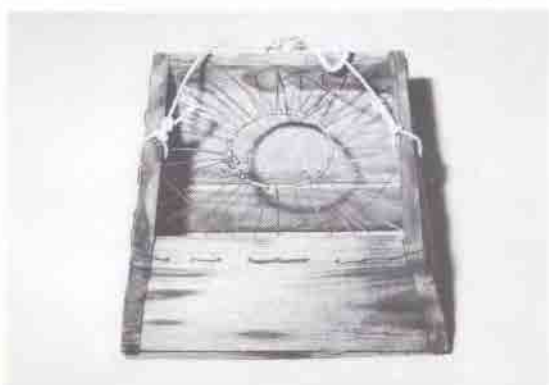
3294



3295



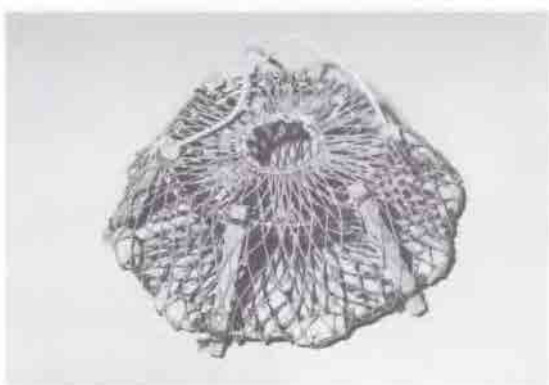
3316



3317



3324



3327



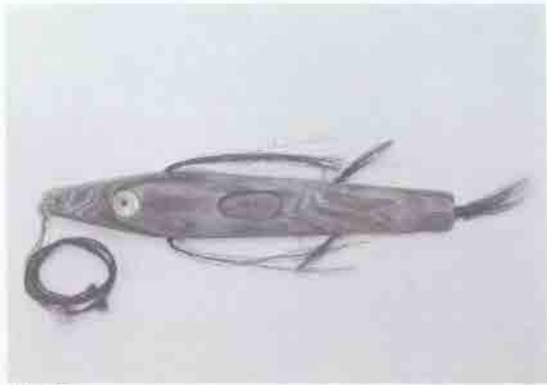
3333



3334



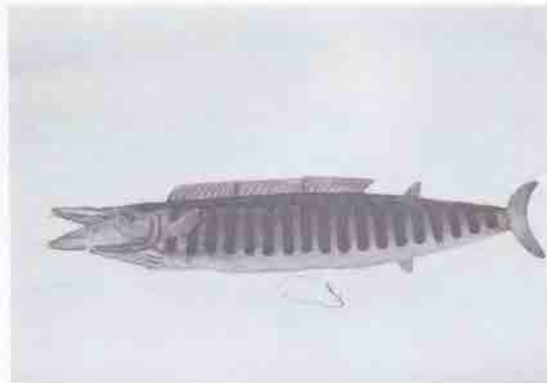
3341



3345



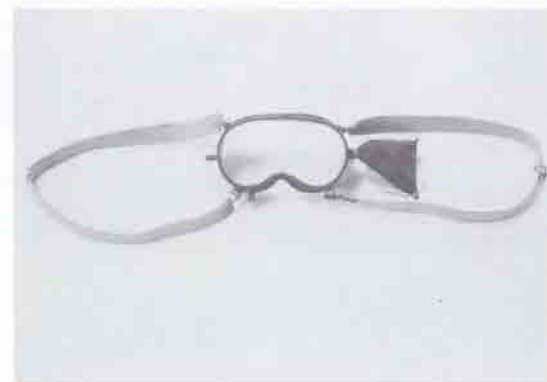
3349



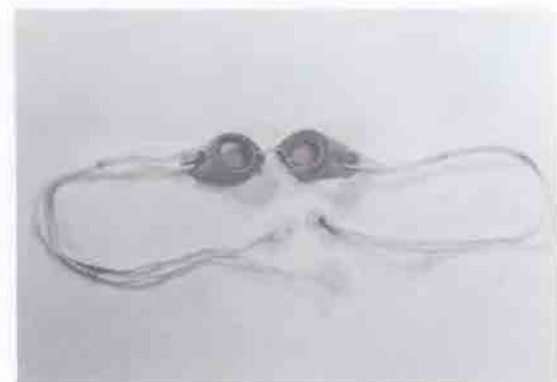
3353



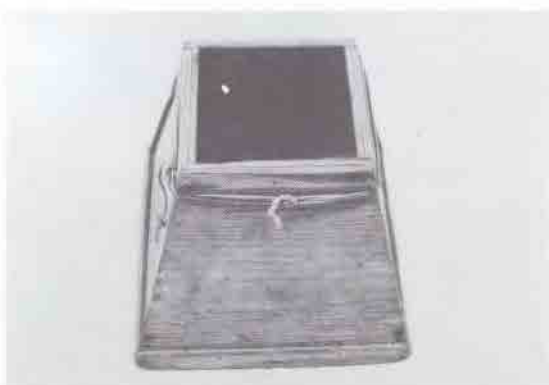
3355



3362



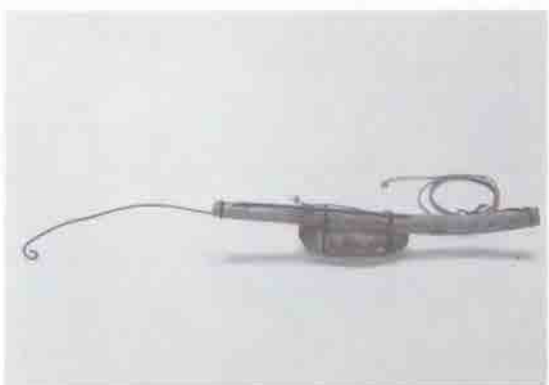
3365



3371



3375



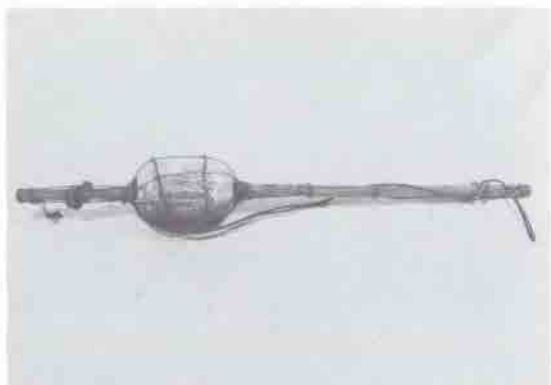
3390



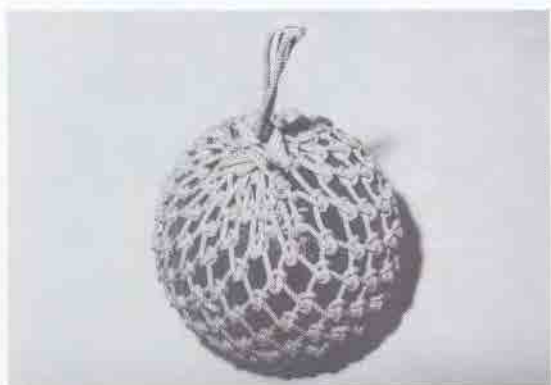
3396



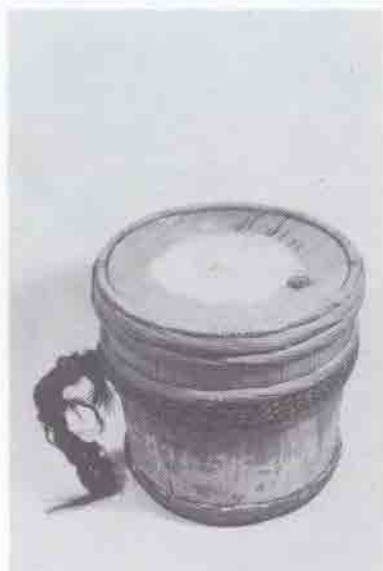
3404



3407



3408



3417



3426



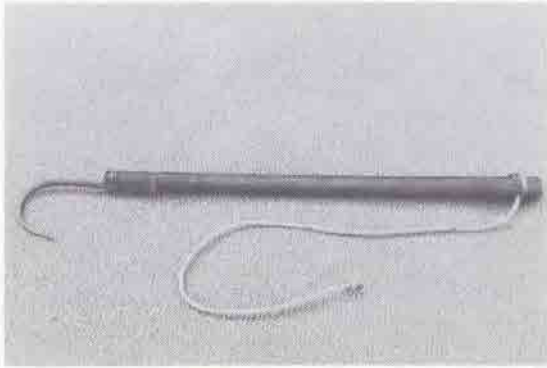
3434



3447



3453



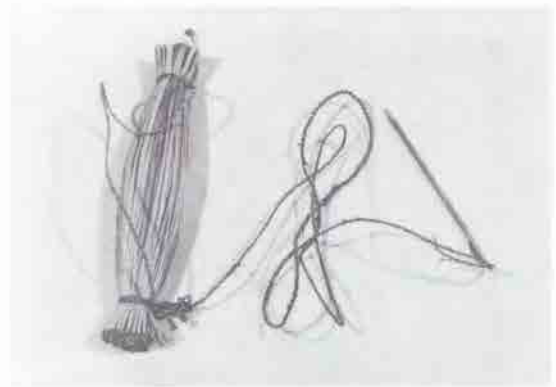
3466



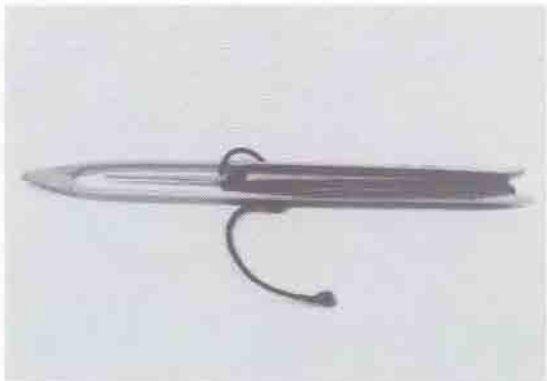
3470



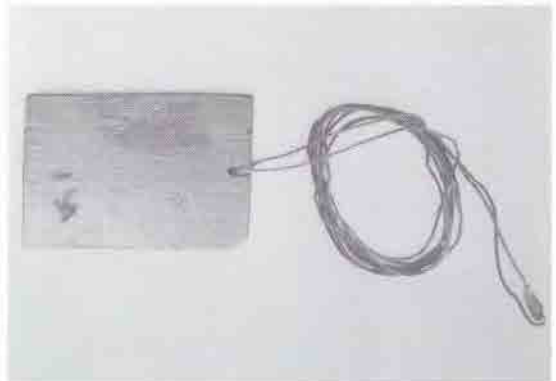
3475



3476



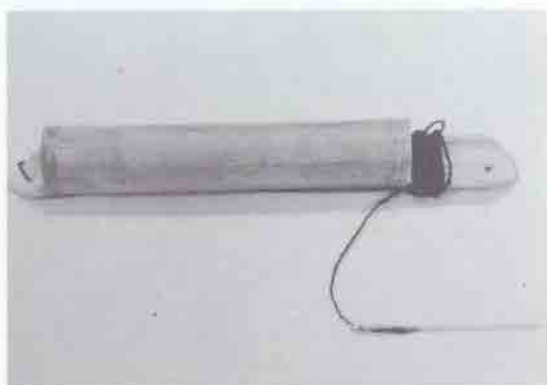
3491



3498



3509



3515

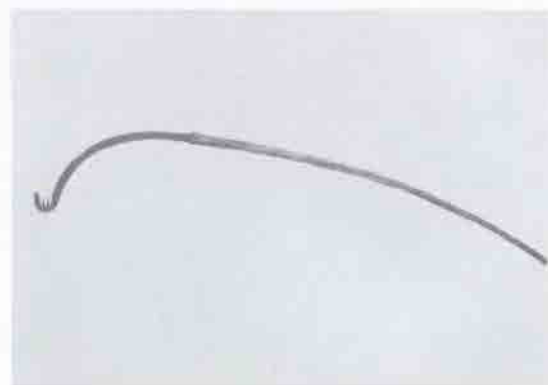
3. 川漁撈具



3528



3531



3542



3546



3550



3570



3575



3584



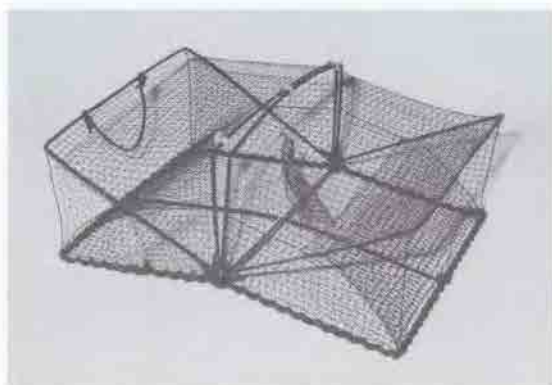
3595



3597



3604



3607

4. 收納・調整・運搬用具



3618



3665



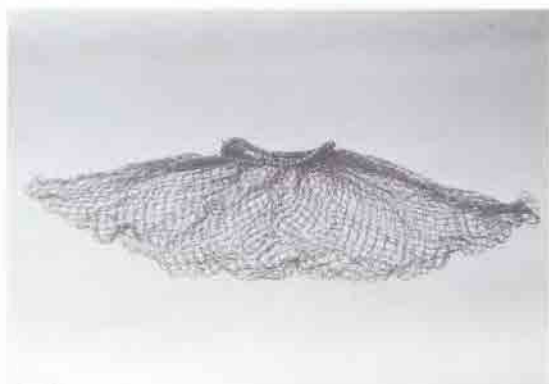
3675



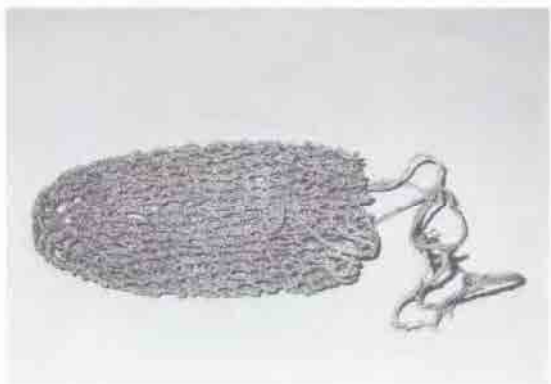
3676



3683



3689



3699

5. 水産製造加工



3711



3733



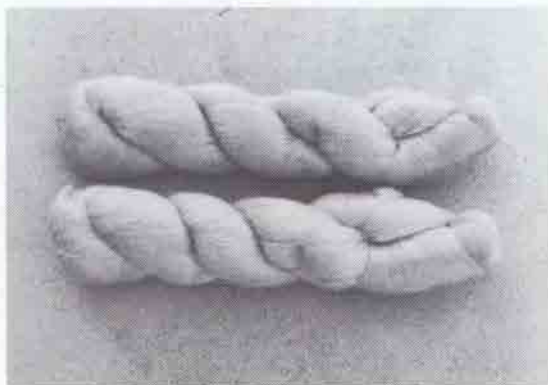
3734

VI. 生糸・染織

1. 繊維の種類

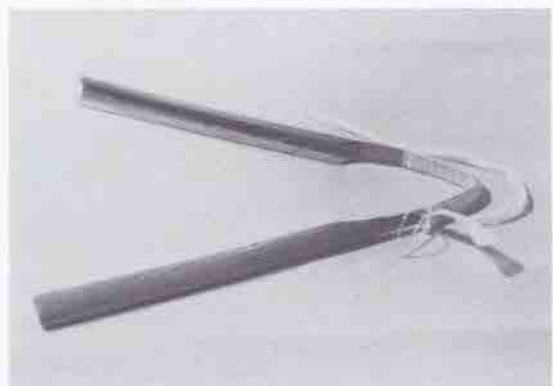


3745



3760

2. 整糸用具



3768



3781



3782



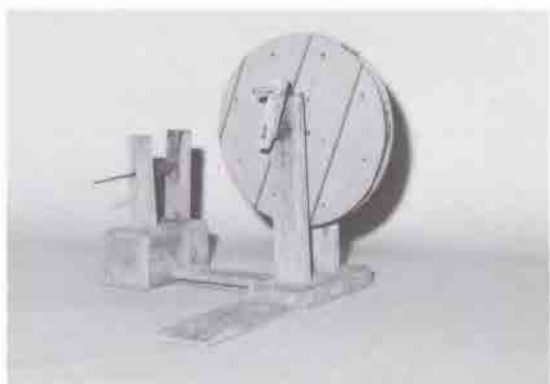
3796



3798



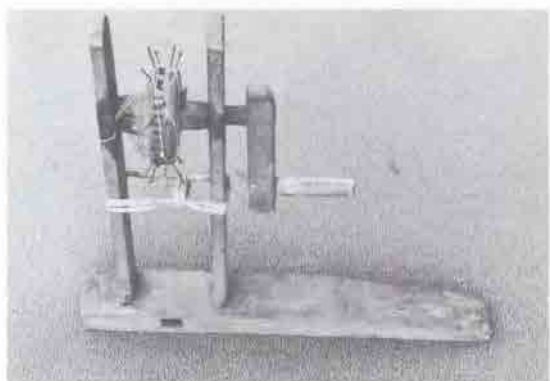
3799



3805



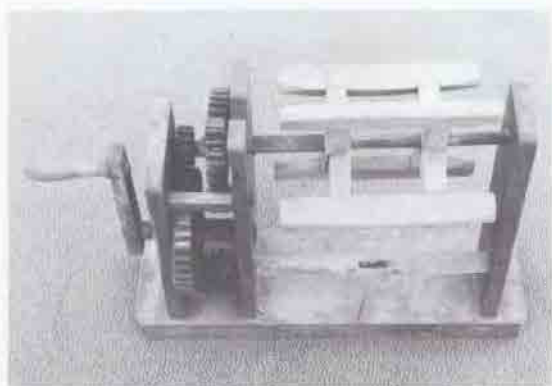
3809



3816



3818



3831



3854



3892



3896



3900



3905

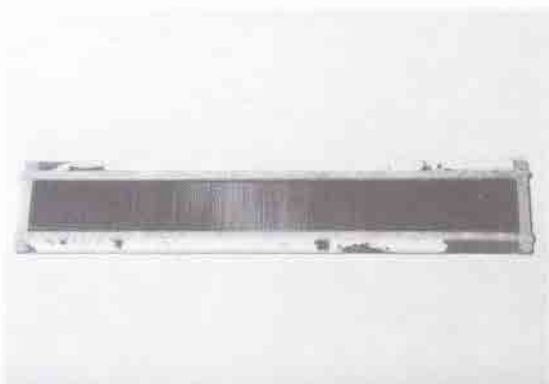
3. 機織り用具



3933



3950



3960



3978



3991



4156

Ⅶ. 手工・諸職

1. 木工細工用具



4167



4171



4172



4175



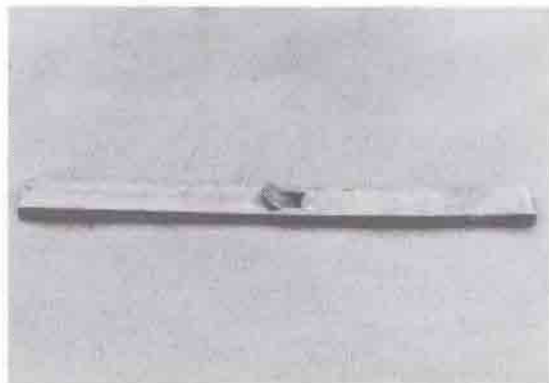
4185



4187



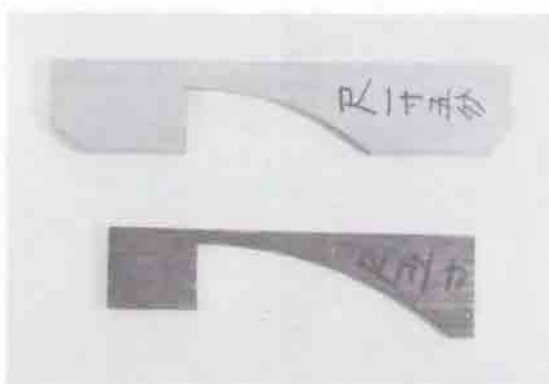
4189



4192



4200



4201, 4202



4203



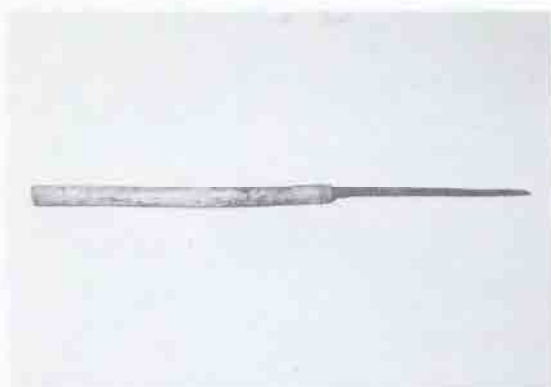
4217



4222



4224



4229

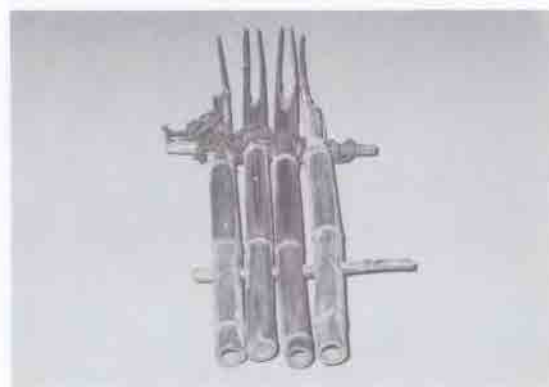


4233

2. 藁細工用具



4234



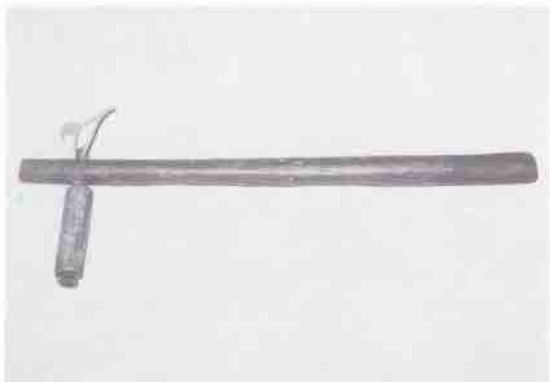
4238



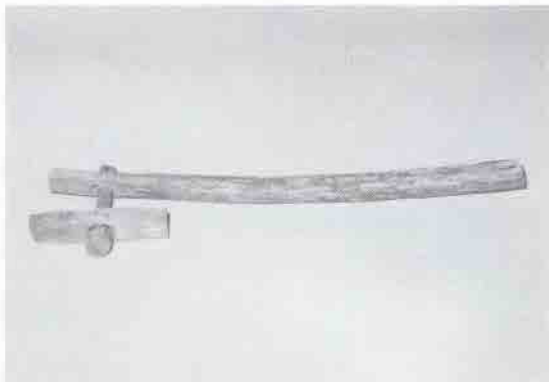
4239



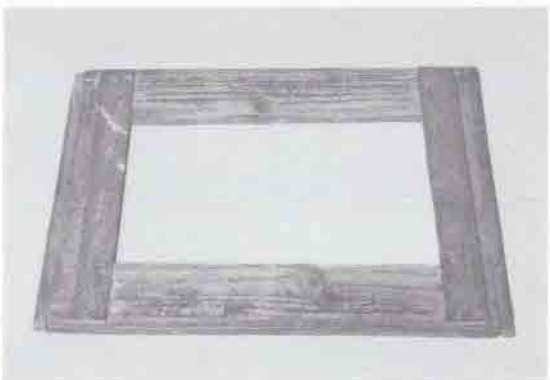
4259



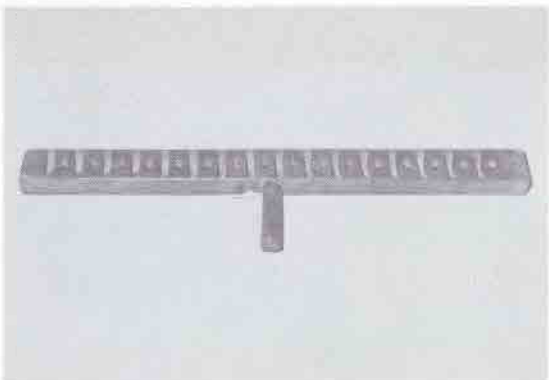
4282



4285



4300



4314



4329



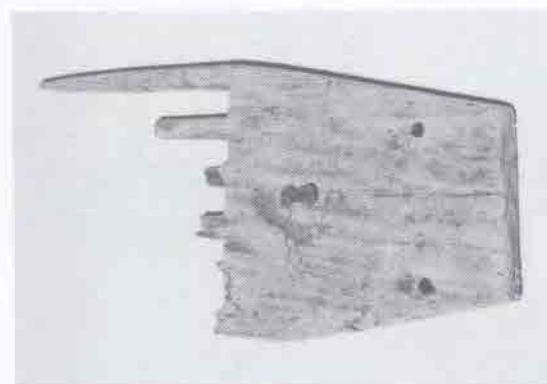
4330



4343



4344



4349



4355

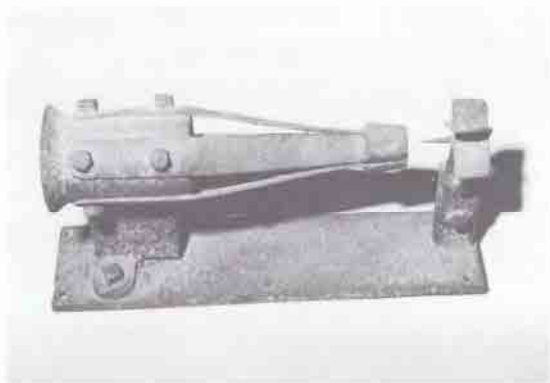
3. 竹細工用具



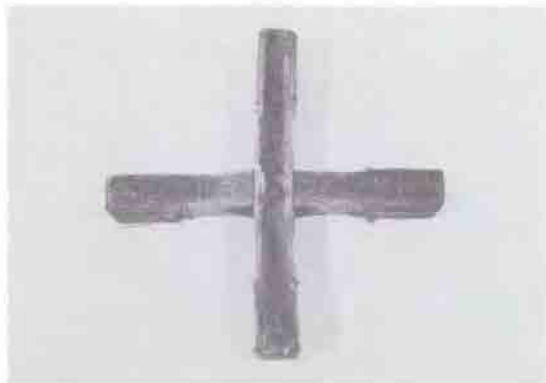
4362



4364



4367



4368



4380

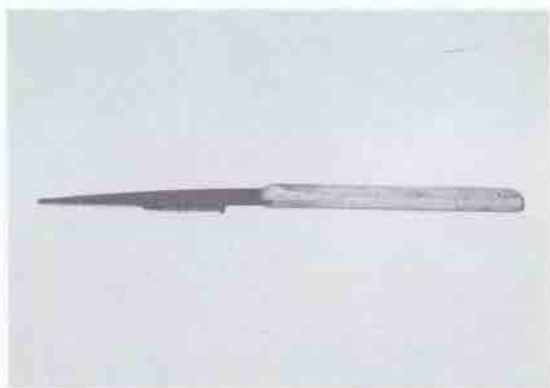


4390

4. 大工・左官用具



4396



4402



4404



4405



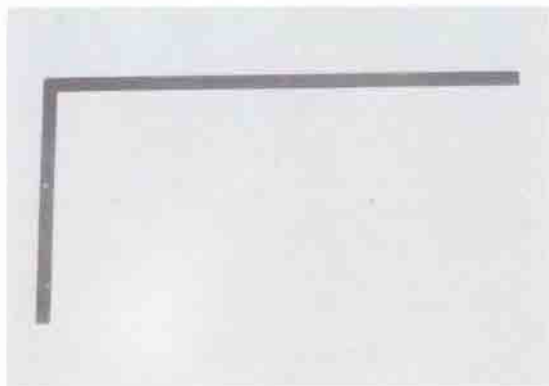
4411



4414



4419



4423



4426



4429



4430



4449

5. 屋根葺用具



4458



4464



4465



4481

6. 土石・窯業用具



4482



4484



4491



4494

7. 鍛冶用具



4497



4510

8. 紙漉き用具



4511



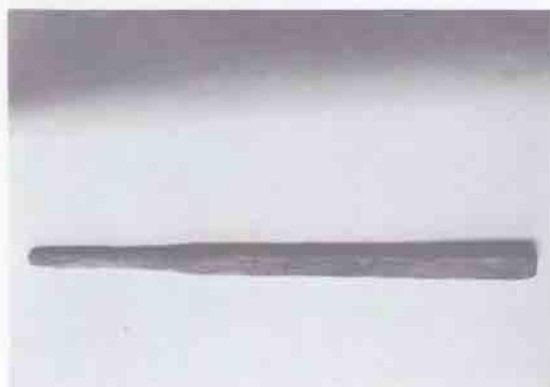
4513



4515



4517



4521



4523



4525



4533



4546



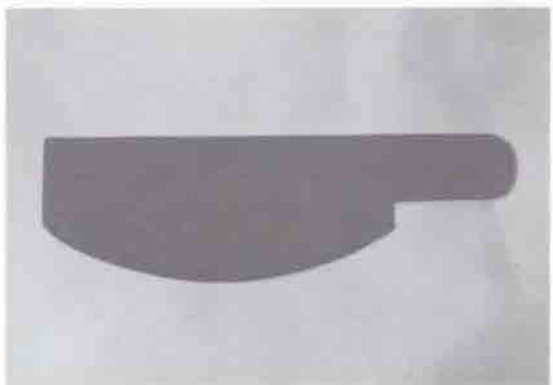
4548, 4551



4553



4555

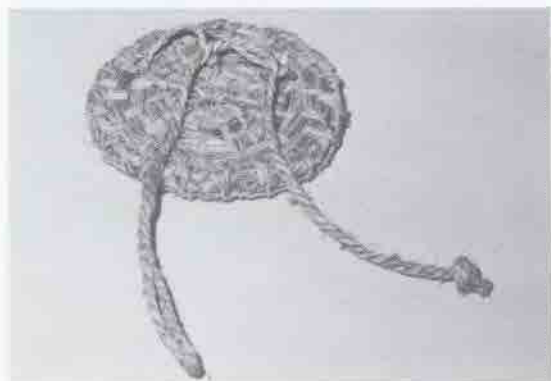


4557

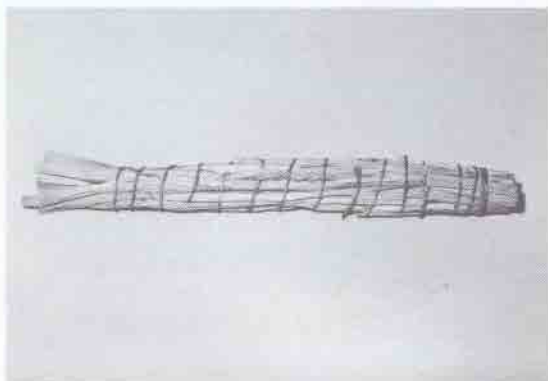


4558

VIII. 鉞 業



4574



4576



4578



4579



4586



4587



4590



4591



4593



4594



4595



4596

IX. 商業



4618



4629



4645



4667



4677



4678