

**Request**

- Please abide by the instructions of museum staff. Please refrain from actions that will inconvenience other visitors.
- Please refrain from eating, drinking, smoking, and making phone calls in the exhibition rooms.
- Please refrain from copying exhibits, and using fountain pens or writing brushes.
- Please refrain from the following actions within the exhibition rooms.

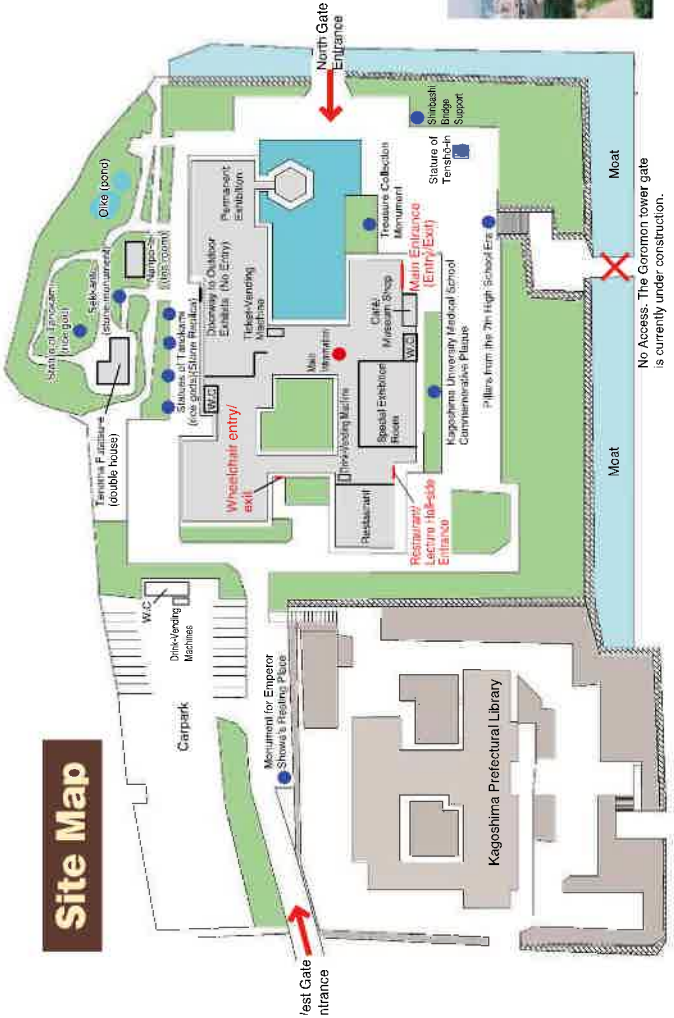


**Photography & Videography**

- Please refrain from taking videos or using flash photography.
- Please refrain from taking photographs at exhibits without the Photographer's Permitted sign.
- Flash photography is not allowed even at exhibits with the Photographer's Permitted sign.
- Please refrain from using tripods and selfie sticks.
- Please do not take videos or photos of other viewers.
- All media should be used for individual, non-commercial purposes only.
- Please do not publicly share pictures and videos taken on social media platforms.



**Site Map**



**Shiroyama Seasoning**

Restaurant

Opening Hours  
10:00~17:00

Lunch Time  
11:00~14:00 (L.O.13:30)

Closed days follow that of Reimeikan's.  
Known as the place which promotes Kagoshima's seasonings, you can enjoy a buffet lunch using Sakura Kaneyo's seasoning. Kagoshima's souvenirs are also sold.



**CHIN JUKAN POTTERY Tea Room and Cafe** Café / Museum Shop

Operating Hours  
Mon-Sat 11:00~18:00 (L.O 17:00)  
Sun, PH 10:00~18:00 (L.O 17:00)

Closed days follow that of Reimeikan's

Snacks and sweets will be served in Satsuma ware for your enjoyment. There will also be a collection of illustrated books, Satsuma ware, and Kagoshima's souvenirs.



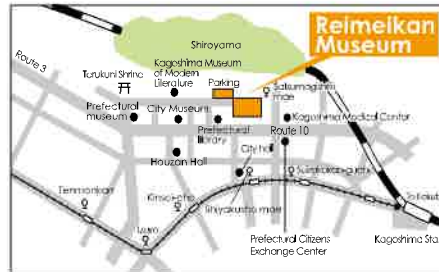
**Opening Hours** 9 am to 6 pm (last admission: 5:30 pm)

**Closed days** Mondays (if Monday is a national holiday, then the following day is closed)  
The 25th of each month (open if it is a Saturday or a Sunday)  
December 31st to January 2nd

**Admission** Permanent Exhibition  
Adult ¥420 High School & University ¥260 Elementary & Junior High ¥160

- Access**
- **By plane** From Kagoshima Airport, take an airport bus bound for Kagoshima City, get off at Kinsei-cho, and then walk for 10 min.
  - **By train** Walk for 15 min. from JR Kagoshima Station. Take a city tram or a bus from JR Kagoshima Chuo Station.
  - **By City tram / bus** Get off at "Shiyakusho-mae" or "Sui-zokukan-guchi" then walk for 5 min.
  - **By sightseeing bus** Get off at "Satsumagishi hi-Mae"

Free parking available for 125 cars and 20 buses



**Kagoshima Prefectural Museum of Culture REIMEIKAN**

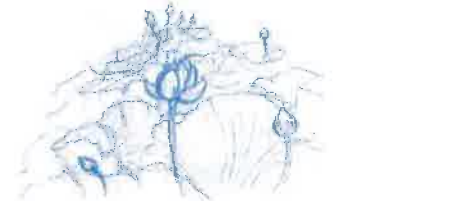
7-2 Shiroyama-cho, Kagoshima City 892-0853  
TEL 099-222-5100 FAX 099-222-5143  
URL <http://www.pref.kagoshima.jp/reimeikan/>



鹿児島県歴史・美術センター

**黎明館**

Kagoshima Prefectural Museum of Culture  
**REIMEIKAN**





# 1st Floor Thematic Exhibits

An exhibit presents the history of Kagoshima in successive periods: Prehistoric/Ancient times, Medieval Times, Early Modern Times, and Modern Times. There are four large display models representing the different time periods.

## Kagoshima in Prehistoric /Ancient times

An exhibit introduces the distinct culture of the Paleolithic period from 30,000 years ago until the Nara and Heian Periods (8th ~ 12th century) by featuring its natural environment and relics.



Display Model of a central post building. (Oji Ruins in Karaya City)

## Kagoshima in Medieval Times

Visitors can learn about the formation process of the Satsuma Domain from the time of the arrival of the Lord Shimadzu, Satsuma, Japan's southern gateway, had contact with the outer world through international trade, the arrival of Christianity and guns, the Japanese invasions of Korea, Satsuma ware, and so on.



Display Model of Mountain Castle in Shibusai Shimadzu Tadahisa



Excavated finds from the Tanegashima Hirata Ruins (Important Cultural Property)

## Outdoor Exhibits

Take a stroll to see a house and plants used for everyday life at the end of the Edo Period (1603-1867), a stone statue of Tono Kami (Deity of rice fields and harvests), and a pond.



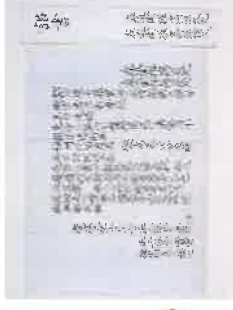
Teromita Futatsure (double house)

## Kagoshima in Modern Times

Kagoshima was the driving force behind the formation of a modern state. Visitors can learn the secrets of its evolution, and its history after the revolution. You can also learn about the people's lives and culture during the Meiji (1868-1912), Taisho (1912-1926), and Showa (1926-1989) periods.



Display Model featuring Teromnikan at the beginning of the Showa Period in the 1920's



Emperor's secret correspondence to overthrow the shogunate

## Kagoshima in Early Modern Times

The Satsuma Clan maintained its power with its unique governance system, such as the outer castle system, and trade monopoly. It became the driving force behind the Meiji Restoration through political reform and the introduction of modern technologies.



Display Model of Izumi Outer Castle



Illustration of Tenpuku (wind instrument) and Satsuma bwa flue being played

## 2nd Floor Exhibit Sections

The unique history and culture of Kagoshima is introduced at each of the sectors of folk customs, history, arts, and crafts.

### Folklore

Located at the south end of Kyushu with many islands, Kagoshima has nurtured a diversity of unique cultures. Visitors can learn about the life of the local people from a large volume of source materials.



Mendon (Wojima Island) Boze (Akusejima Island) (UNESCO Intangible Cultural Heritage)



Cultivation and Gathering (Agriculture and Fishery)



Bamboo Tools (Comparison with Southeast Asia)

## 3rd Floor Free Zone

Experiential Learning Room

Admission Free Zone

3rd Floor Lobby

## Floor Exhibit Sections

Prefectural Information Section

Multi-Media Library

Local Information Library

Exhibition Room for Special Plans

Japanese Calligraphy

Satsuma Ware

Arts and Crafts

Western Painting/ Sculpture

Cultivation and Gathering

Food, Clothing and Housing

The Southern Islands: World of Waters



Kagoshima joku ezu byobu

Military uniform belonging to Saigo Takamori



Satsuma Domain's Artillery, Diorama



Brunat Engine (Tomiooka Silk Mill), Diorama



History

The Satsuma Domain and the Meiji Restoration

History

Satsuma Domain's Efforts to Attain Modernization

Special Exhibition

Tamazato Shimadzu Family

The Great Leaders of Kagoshima



Blast Furnace, Diorama



Brunat Engine (Tomiooka Silk Mill), Diorama



## Arts and Crafts



Flower Vase with design of porcelain. Over-GLAZE enamel and gold

## Experiential Learning Room

Hands-on artifacts such as old-time fishing tools, armor, weaving machines, and musical instruments are also on exhibit.

## Arts and Crafts

There is a large collection of fine arts and artifacts in Kagoshima, and their production is still active today. Visitors can see the beauty of Kagoshima and learn how the arts have been developed.



Artist: Kimura Tengen "Drawings of Zong Ku"

Artist: Kuroda Seiki "The Woman in Red"



Japanese Sword "Kuni Mine" (National Treasure)

Artist: Yonehara Unkai "Statue of Kuroda Kiyomasa"

